



BIOCLEAR LEARNING CENTER

Tacoma USA · Solihull UK
Varberg Sweden · Cairo Egypt
Syracuse Italy · Taubate Brazil
Livermore CA (Bioclear pediatrics)
Seoul Korea · Madrid/Barcelona
Sydney Australia · Baghdad Iraq

For a copy of today's presentation,
Learning Center info or the essential
Learning Center Library





Recommended Bioclear Matrices by Indication

For more information contact us
Bioclear Matrix Systems
1-855-712-5327



360 Veneer

Class V and to significantly increase overjet or correct anterior open bite.



TSS Kit

Anterior Teeth:
Class III, Class IV, Class V
Fractured Incisors
Severe Wear
Composite Veneer
Full Composite Crown



BT (Black Triangle) Kit

Anterior Teeth:
Black Triangles
Peg Laterals
Diastema Closure
Instant Ortho
Class V



Evolve Matrix Kit

Posterior Teeth:
Class I, Class II, Class V



TOOTH & SURFACE SPECIFIC
MATRIX SYSTEM

BY  BIOCLEAR

Item Number:

#828011



Anterior Matrices

#6 through #11 in Mesial & Distal
Small & Medium Lower Incisor

Wedges

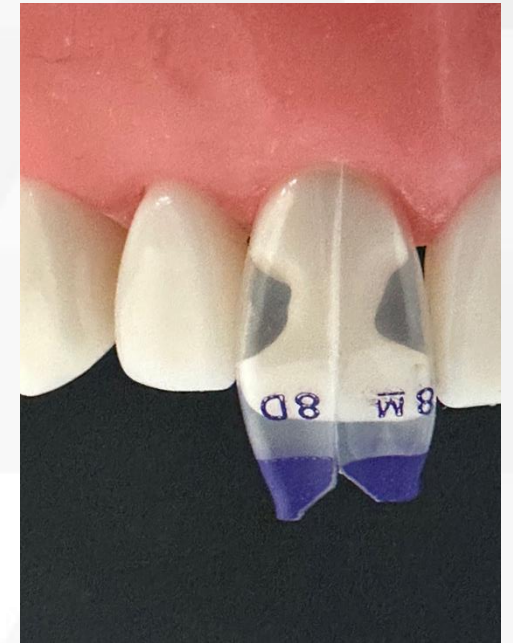
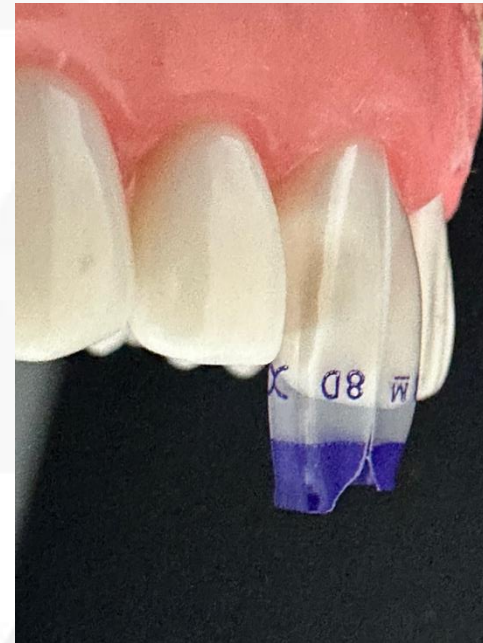
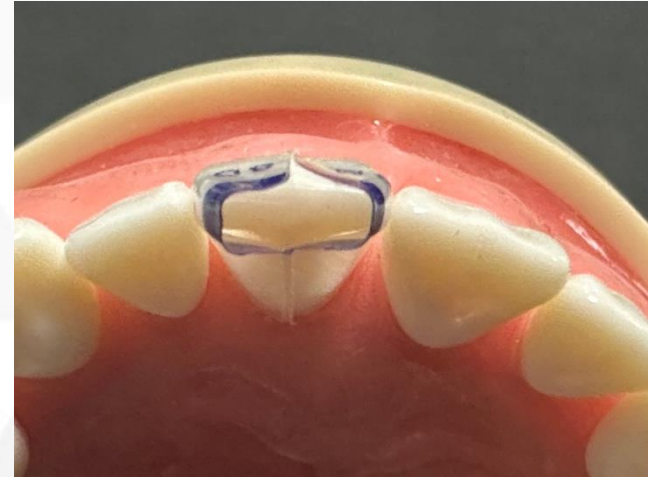
Small Diamond Wedges
Medium Diamond Wedges

Matrix Shape

For the first time, we have a matrix that is actually shaped exactly like a normal tooth.

Bioclear's patented technology on the TSS creates a small facial and lingual overlap that allows for differentiation in tooth size – acting like an expandable form.

e.g., pairing 8M with 8D provides an ideal containment system for nearly every maxillary central incisor (#8)





The next generation of anterior matrices: We're taking the guesswork out of matrix selection



Indications

- Small to large anterior decay (Class III and IV)
- Wrap-around decalcification or mottled enamel cases
- Composite veneers
- Direct composite crowns
- Incisal edge or tooth fracture
- Basically, any tooth that has a normal papilla



The Bioclear TSS Matrix System

Tooth & Surface Specific Matrix System for Anterior Teeth







Dan placed a Direct Contact Strut which made his life way easier and the case much better.



Dan placed a Direct Contact Strut which made his life way easier and the case much better.









Courtesy of Dr.
Dan Henricksen



Majesty ES flow and paste combo

Is monolithic injection molded composite a viable alternative to full ceramic crowns in some cases?

You be the judge of that



The patient is a 35- year-old male. His original chief complaint was a discolored filling on the distal of tooth #8. The patient was given two treatment plans, one to simply replace a few defective restorations and remove caries with traditional fillings or in patient terms we said, “We can patch the holes, or I can rejuvenate your smile. The patchwork plan will be healthy but will not make a significant esthetic change. In addition, the severe wear and acid erosion present on the palatal surfaces could eventually lead to catastrophic problems later i.e. root canals, infection, and tooth loss.” The patient opted for Bioclear rejuvenation versus simple fillings because he wanted a beautiful smile. He chose Bioclear in lieu of crowns because he understood that Bioclear is a more conservative and healthier approach to achieving his goals than traditional crowns.

Phase one of the treatment plan was to restore the anterior six teeth, simultaneously opening the vertical dimension to reduce the need for aggressive tooth reduction for material thickness. In addition, because the patient needed to have the teeth lengthened by 2 mm, opening the vertical dimension by 2 mm allowed the overbite to be more ideal. Because the patient could only commit to the cost of the six Bioclear restorations (\$11,600) we placed transitional occlusal flowable composites (thick sealants) on the four maxillary premolar teeth, and we will allow the molars to settle into occlusion utilizing the well-researched Dahl Technique.

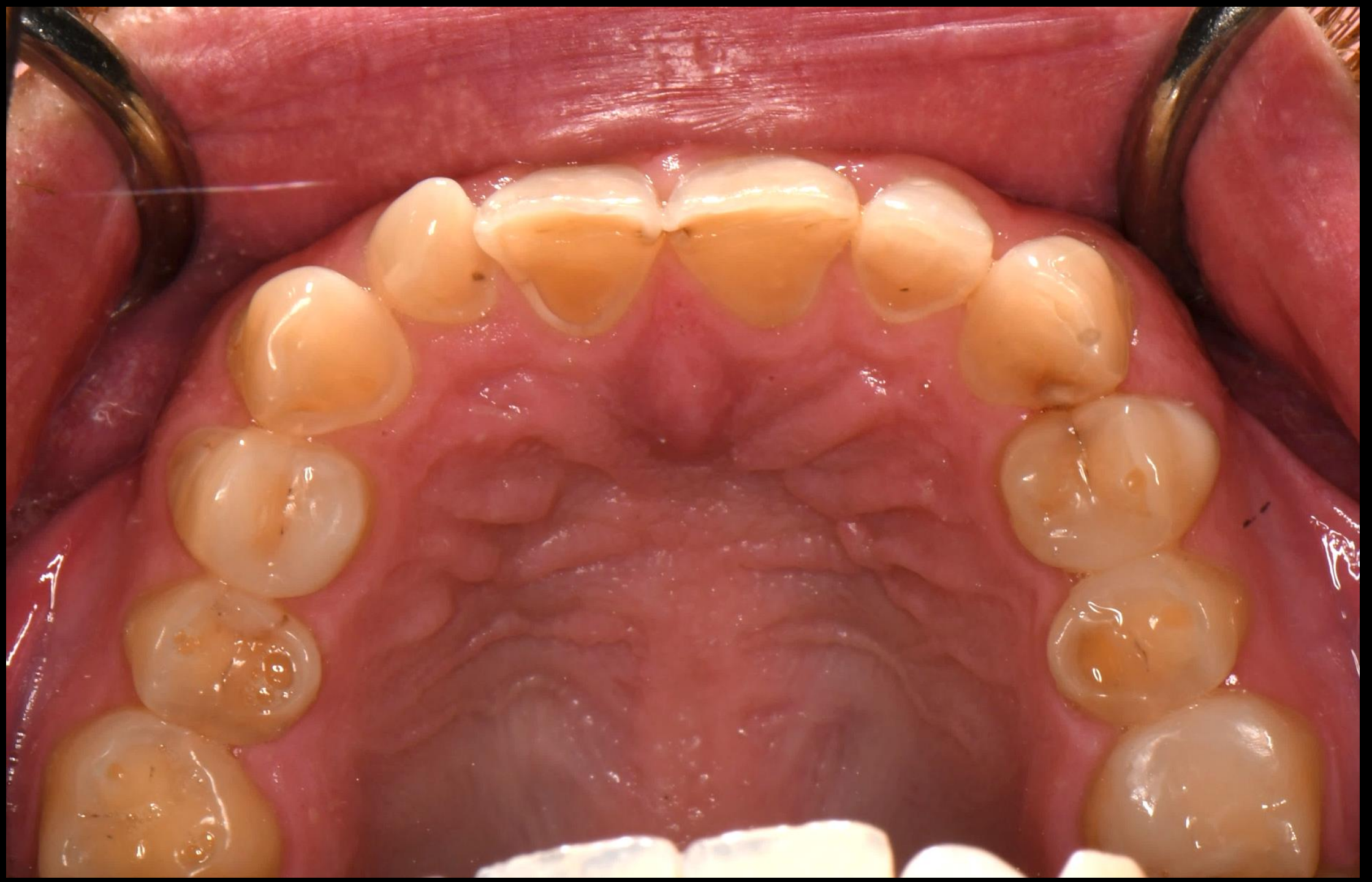
Phase two will be to restore the remaining teeth with Bioclear when the patient has his finances ready.

Treatment Summary Short Version:

Treatment was finished in a single 4-hour session. (Less experienced clinicians should plan to give one hour per tooth). Bioclear TSS Matrices were utilized on all the teeth except tooth #10. #10 required the Bioclear BT matrix system to create “instant ortho” and because a diastema was present there. Bioclear Diamond wedges were used as needed in areas where the contact was lost during caries removal or removal of old composites. Bioclear RSP X-course discs (Black) were used to shape the incisal edges and smooth the small seams present where the matrices meet on the facial and palatal. Final polish was achieved with Bioclear Magic Mix and then Rock Star Polish cups and cones.

One-week postoperative visit revealed healthy teeth and gingiva. The patient was ecstatic about his new smile, had zero post-operative pain or sensitivity, and expressed that his new bite with the increase in VDO felt more comfortable than before.





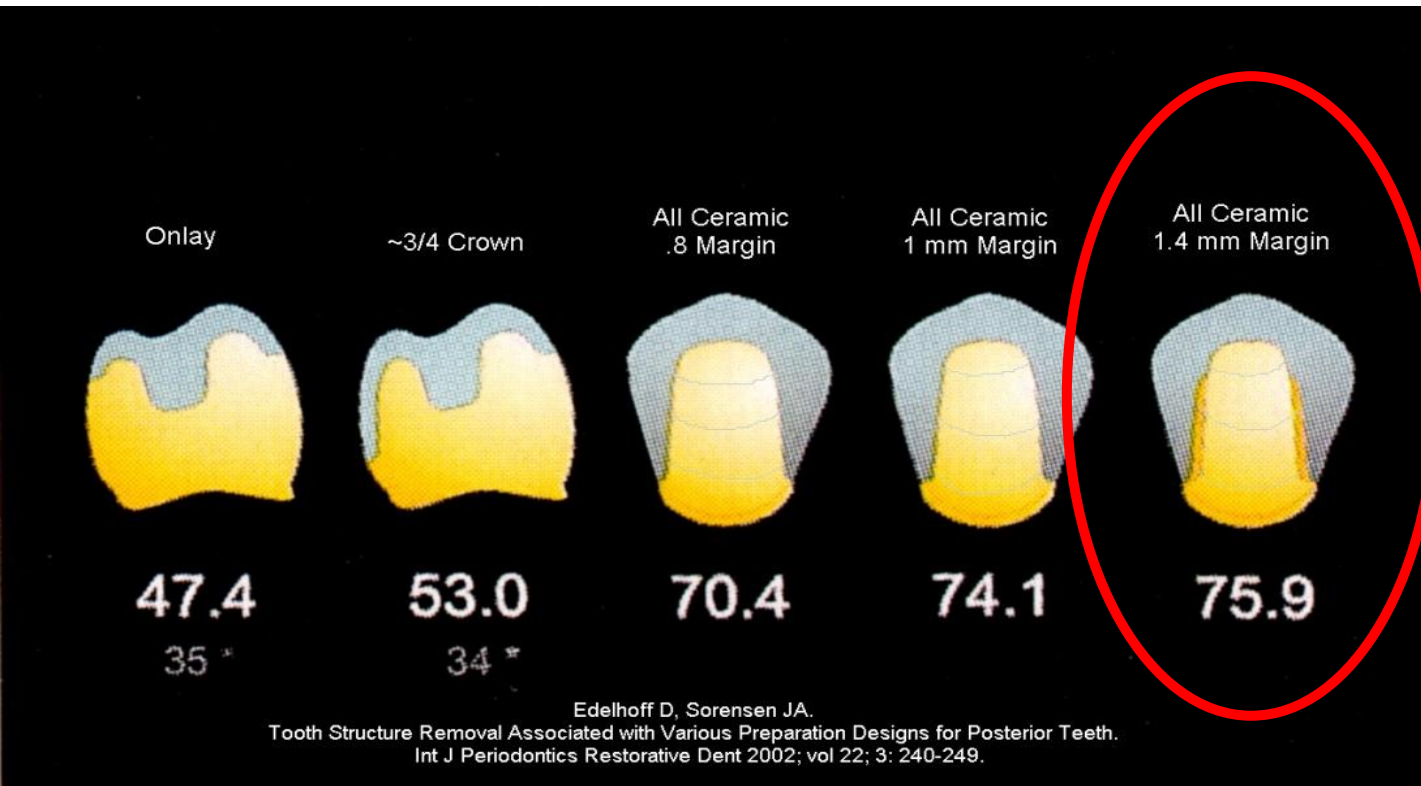


What percentage of the tooth is removed for a conservative crown prep?



Source: Google Images

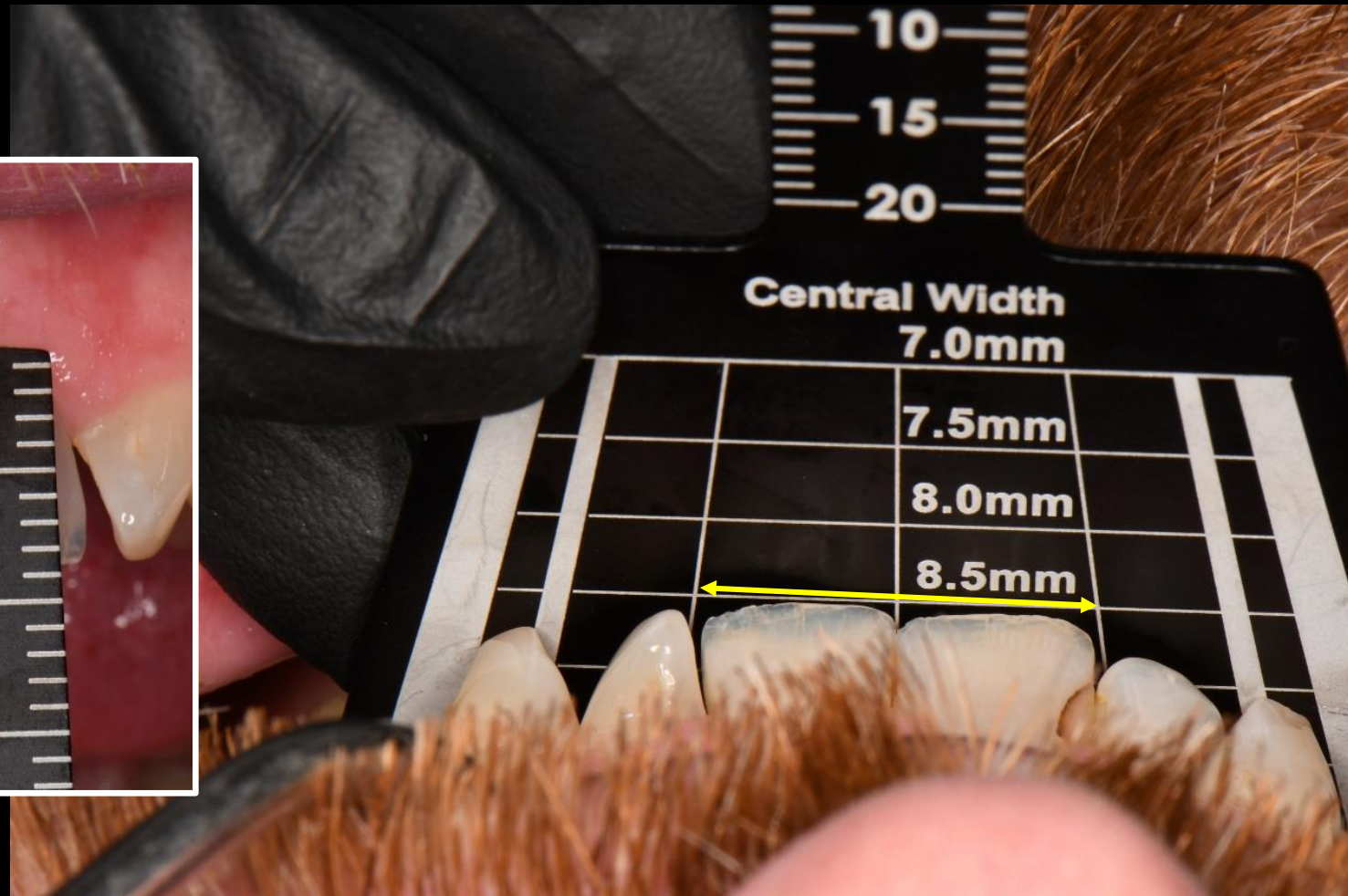
What percentage of the tooth is removed for a conservative crown prep?



How long are his teeth? 8.5mm



How wide are his teeth? 8.5mm



5
10
15
20

Central Width
7.0mm

7.5mm


8.0mm

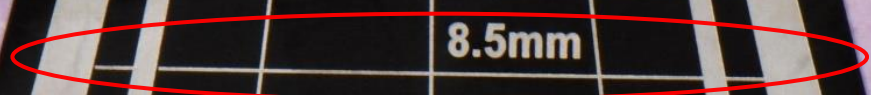
8.5mm

9.0mm

9.5mm

10mm

 **Panadent**
Esthetic Proportion
Gauge



Central Width | **Central Height**

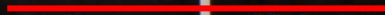
8.0mm | 10.0mm

8.5mm | 10.6mm

9.0mm | 11.2mm

9.5mm | 11.8mm

10.0mm | 12.5mm















TSS

TOOTH & SURFACE SPECIFIC
MATRIX SYSTEM
BY BIOCLEAR



160 Anterior Matrices
45 Standard Anterior & Diagonal
Small & Medium Universal

75 Bridges
25 Small Bridges
50 Medium Bridges

**The next generation
of anterior matrices:**

We're taking the
guesswork out of to
matrix selection



Contact your BioClear Sales Rep to Pre-Order
WWW.BIOCLEARMATRIX.COM
1.800.712.5327



TSS

TOOTH & SURFACE SPECIFIC
MATRIX SYSTEM
BY BIOCLEAR



100 Anterior Matrices
100 Wedges
100 Posterior Matrices

**The next generation
of anterior matrices:**
We're taking the
guesswork out of
matrix selection



Contact your Bioclear Sales Rep to Pre-Order
www.bioclearmatrix.com
1 800 775 5227





TSS

TOOTH & SURFACE SPECIFIC
MATRIX SYSTEM
BY 3 BIOCLEAR



168 Anterior Matrices
168 Anterior 21 to 22 mm & 22 to 23 mm
168 Anterior 23 to 24 mm & 24 to 25 mm

75 Workups
25 Anterior 21 to 22 mm
25 Anterior 23 to 24 mm
25 Anterior 25 to 26 mm

**The next generation
of anterior matrices:**
We're taking the
guesswork out of to
matrix selection



Contact your Member Sales Rep to Pre-Order
www.3bioclearmatrix.com
1 800 710 5327



TSS

TOOTH & SURFACE SPECIFIC
MATRIX SYSTEM
BY 3D BIOCLEAR



100 Anterior Matrices
100 Anterior Matrix
100 Anterior Matrix
100 Anterior Matrix

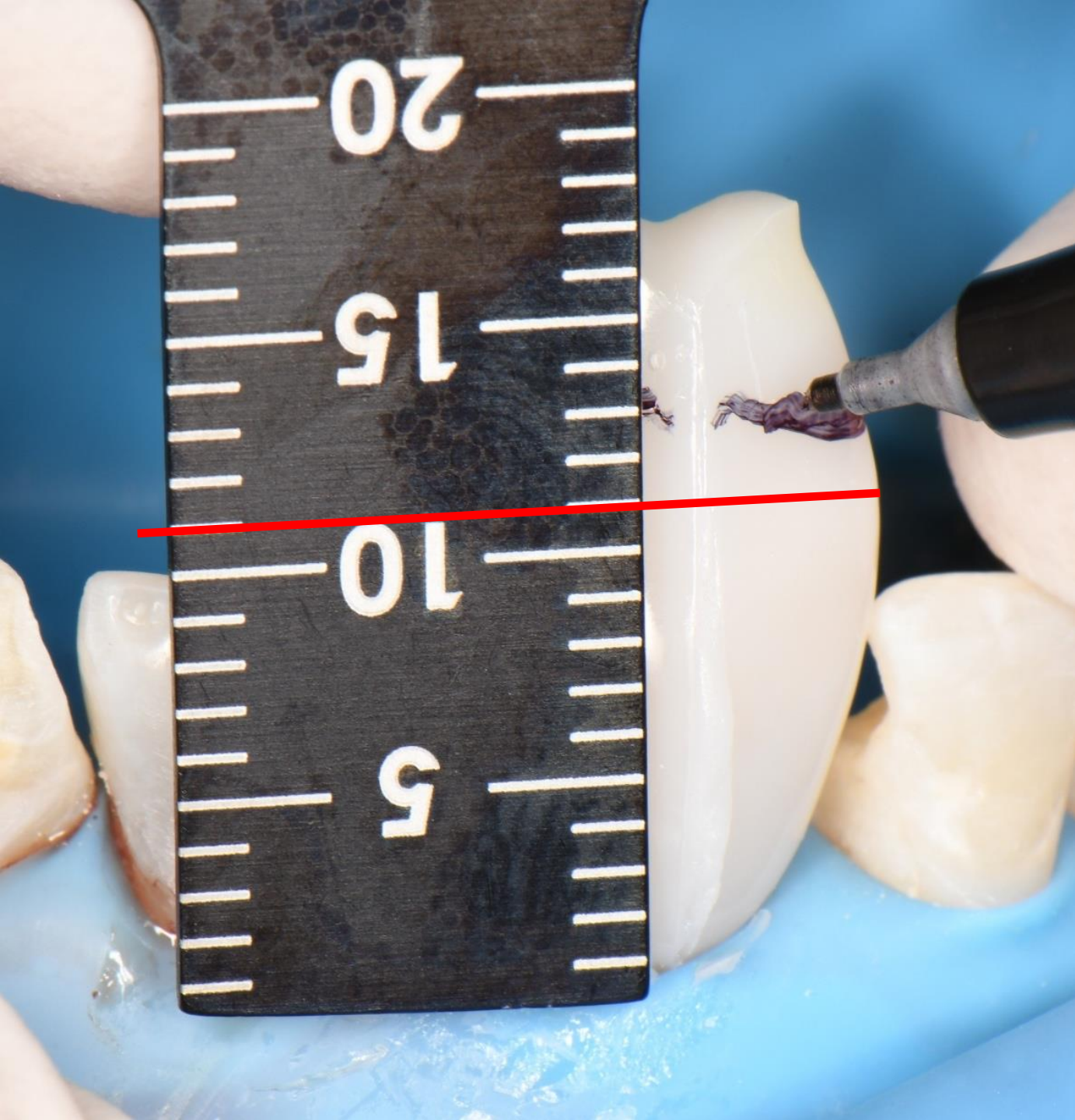
100 Matrices
100 Matrices
100 Matrices
100 Matrices

**The next generation
of anterior matrices:**
We're taking the
guesswork out of
matrix selection.



Contact your BioClear Sales Rep to Pre-Order
www.3dbioclearmatrix.com
1 800 752 5127

























7M

7D











Pre-operative



Immediate Post-Operative



One Week Post-Operative













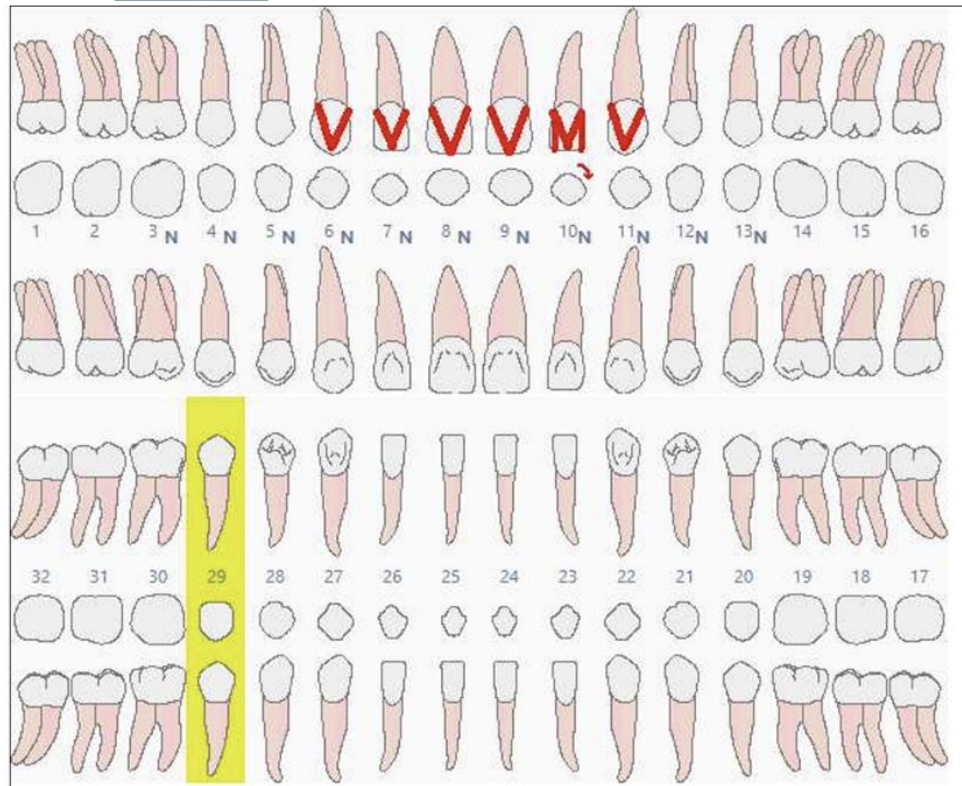
Last week...the day of treatment



1-week
post-op

Patient Chart

Patient Name
Patient ID



Date	Description	Provider	Tth	Surf	Status	Fee
1/15/2026	2993A - BIOCLEAR 360 REJUVENATION COMPLEX	David J. Clark, D.D.S.	6		Proposed	\$1,840.00
1/15/2026	2993A - BIOCLEAR 360 REJUVENATION COMPLEX	David J. Clark, D.D.S.	7		Proposed	\$1,840.00
1/15/2026	2993A - BIOCLEAR 360 REJUVENATION COMPLEX	David J. Clark, D.D.S.	8		Proposed	\$1,840.00
1/15/2026	2993A - BIOCLEAR 360 REJUVENATION COMPLEX	David J. Clark, D.D.S.	9		Proposed	\$1,840.00
1/15/2026	2993A - BIOCLEAR 360 REJUVENATION COMPLEX	David J. Clark, D.D.S.	10		Proposed	\$1,840.00
1/15/2026	2993A - BIOCLEAR 360 REJUVENATION COMPLEX	David J. Clark, D.D.S.	11		Proposed	\$1,840.00
1/15/2026	199.2 - BIOCLEAR ORTHO CORRECTION PER TOOTH	David J. Clark, D.D.S.	10		Proposed	\$306.00
1/15/2026	299.5 - BIOCLEAR DIASTEMA CLOSURE	David J. Clark, D.D.S.	10	MD	Proposed	\$285.00



Total Bioclear Case Fee?

\$11,631

CLEARFIL™

Injection Molded Composites



DENTAL BONDING AGENTS
CLEARFIL™ Universal Bond Quick 2



DENTAL LIGHT-CURED RESTORATIVE COMPOSITE
CLEARFIL MAJESTY™ ES Flow



DENTAL LIGHT-CURED RESTORATIVE COMPOSITE
CLEARFIL MAJESTY™ ES-2
Classic
(Body Shades)

Why Are CLEARFIL MAJESTY Esthetic (ES) Composites Recommended for Injection Molded Anterior Composites?

- **Proven Color Stability^{1,2,3,4}**
- **High Polish & High Polish Retention**
- **No Air Bubbles in ES Flow**
- **No Air Pockets in MAJESTY ES-2 Pastes**
- **MAJESTY ES Flow & ES-2 Pastes Have Matching Shades/Same Color Chemistry**



Handling Differences When Using CLEARFIL MAJESTY Composites!

- **MAJESTY ES Flow** has a medium viscosity that will inject easily into matrices or stents.
- **MAJESTY ES-2 Pastes** are Softer than most composites.
- Will inject more easily
- Softer composites are easier to seal rough enamel margins



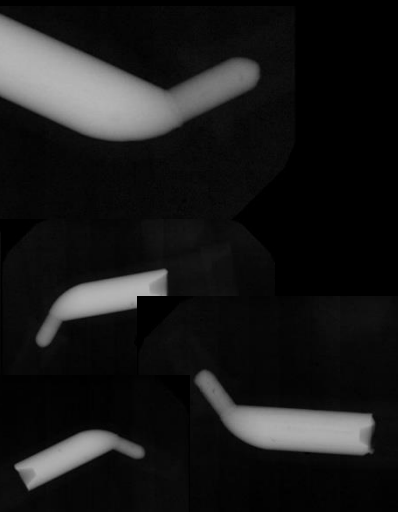
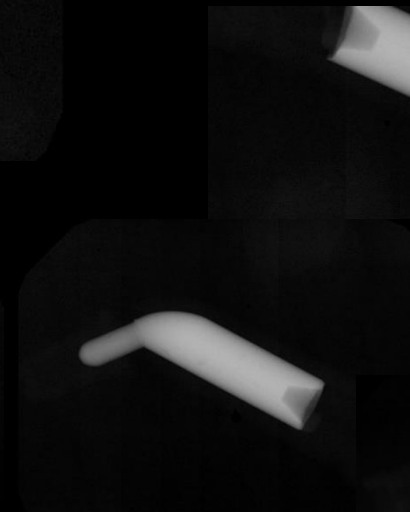
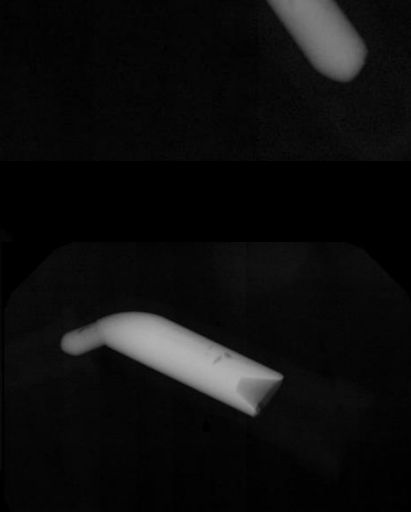
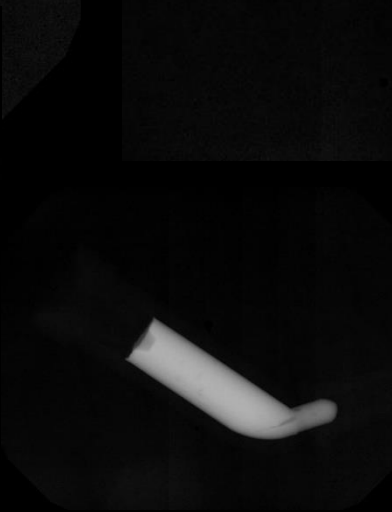
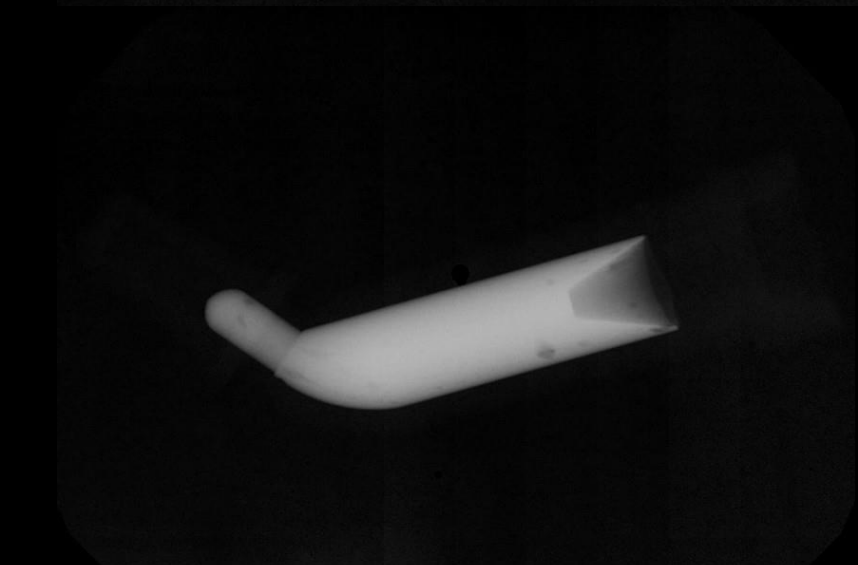
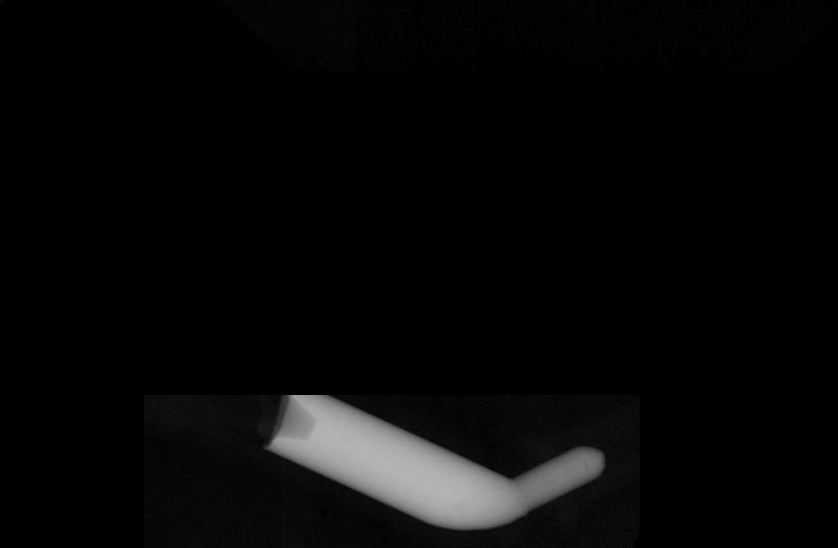
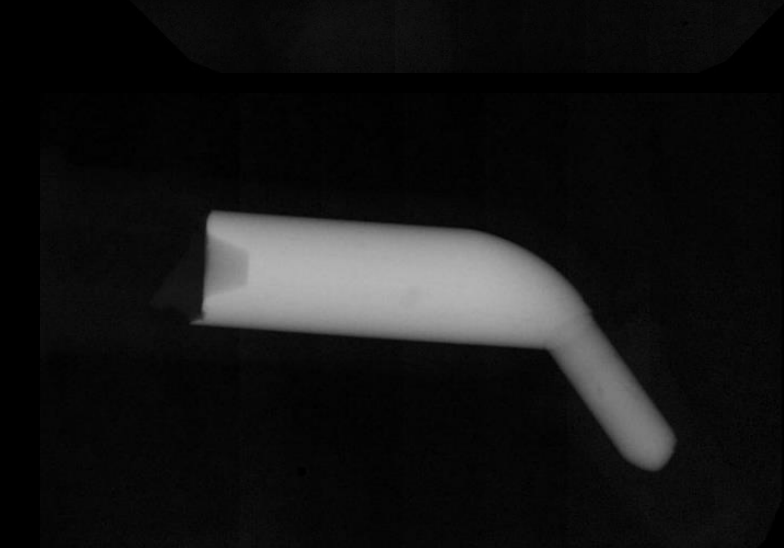
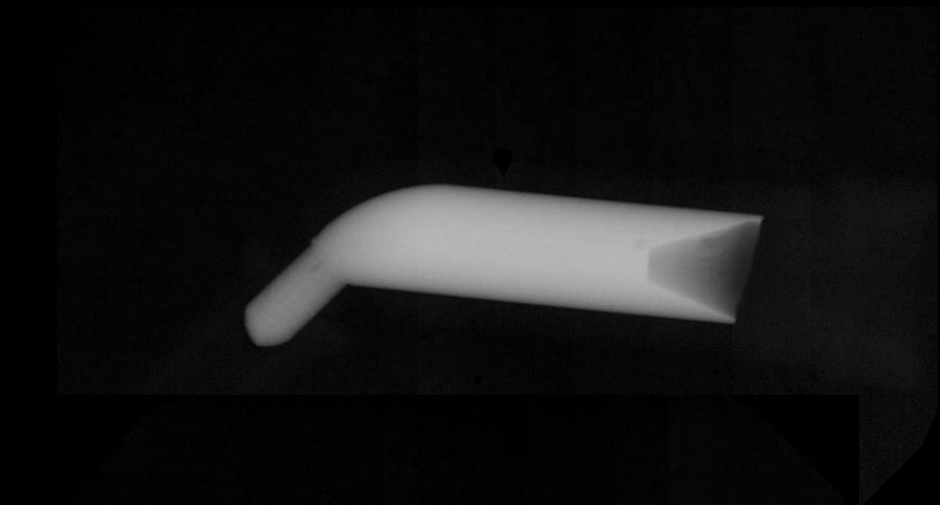
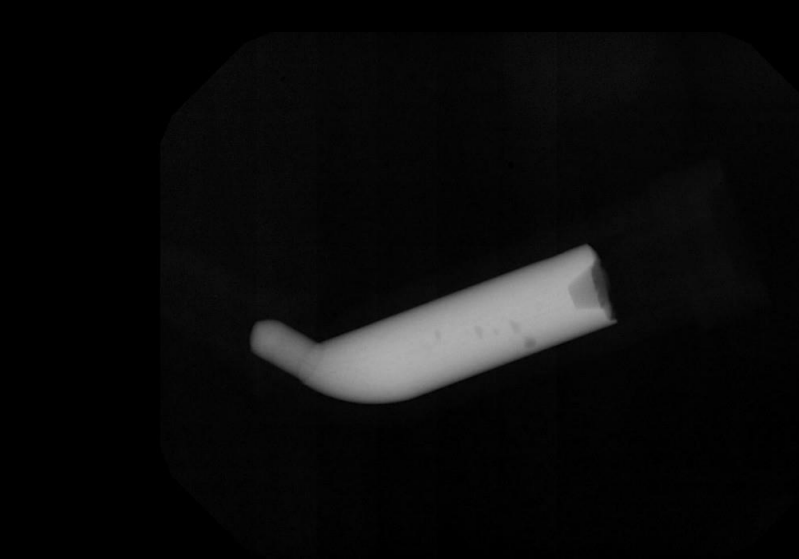
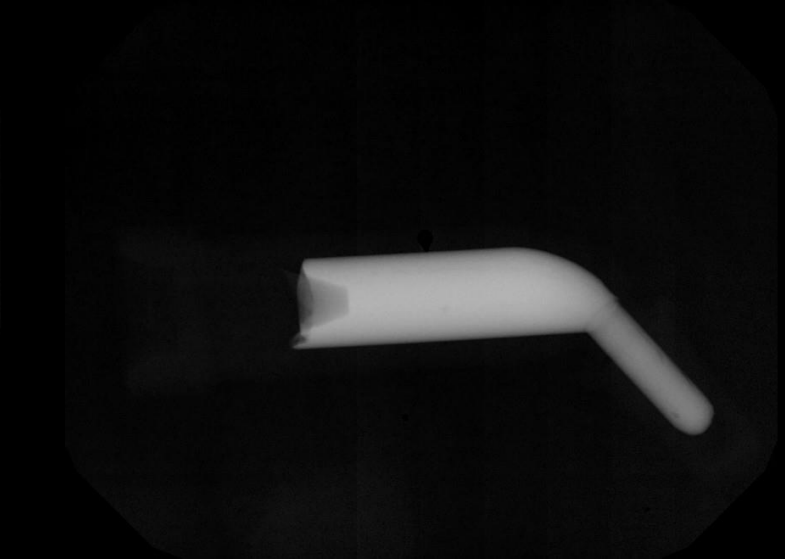
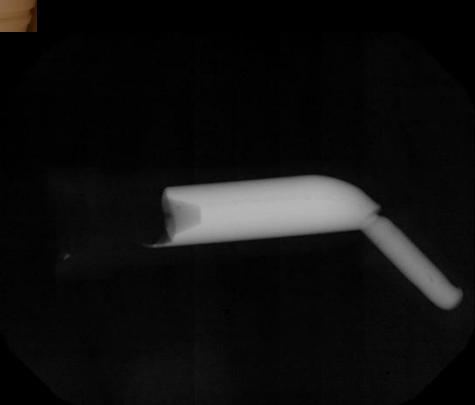
DENTAL LIGHT-CURED RESTORATIVE COMPOSITE
CLEARFIL MAJESTY™ ES-2
Classic
(Body Shades)

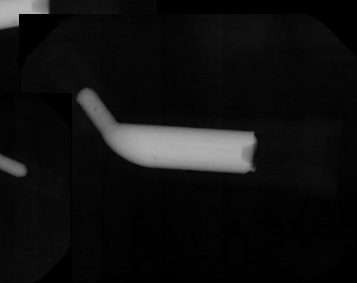
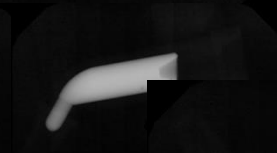
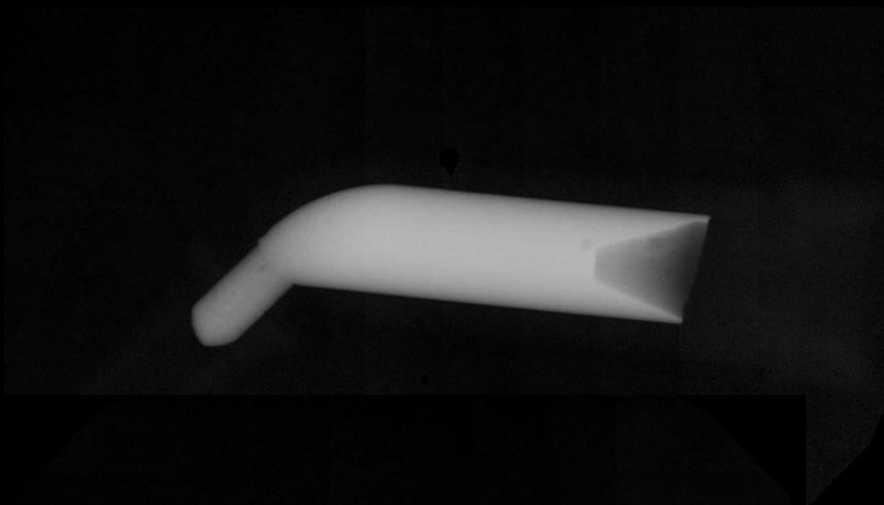
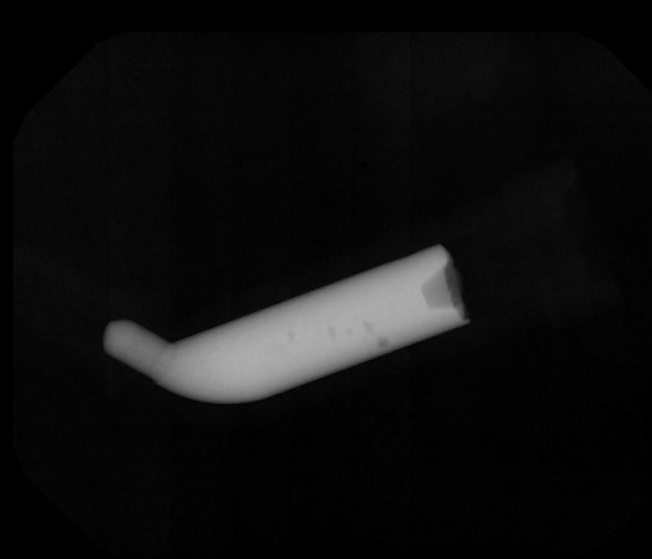
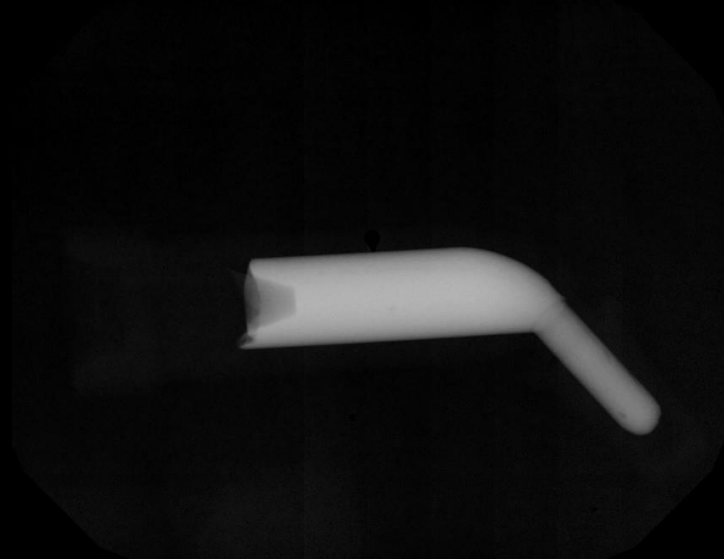
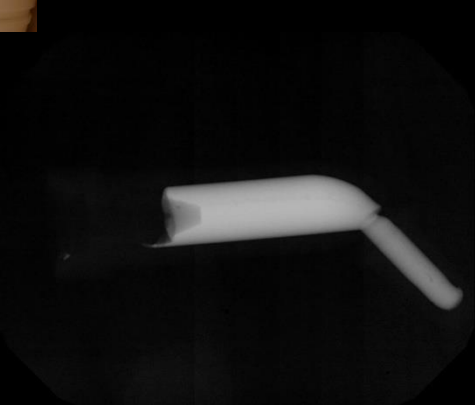
Handling Differences When Using CLEARFIL MAJESTY Composites!

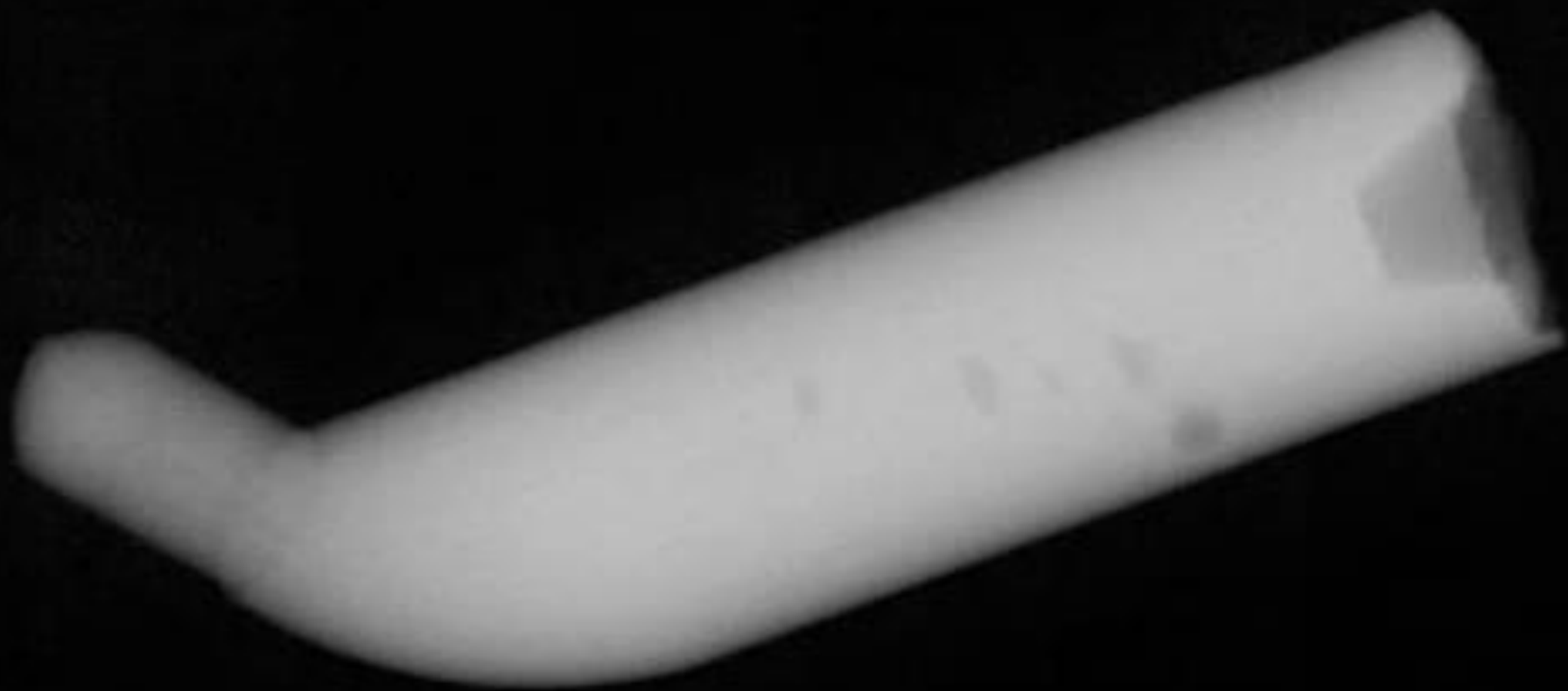
- Even though these 2 materials flow better and are softer to place...
- They will be harder after curing & you should notice this when finishing

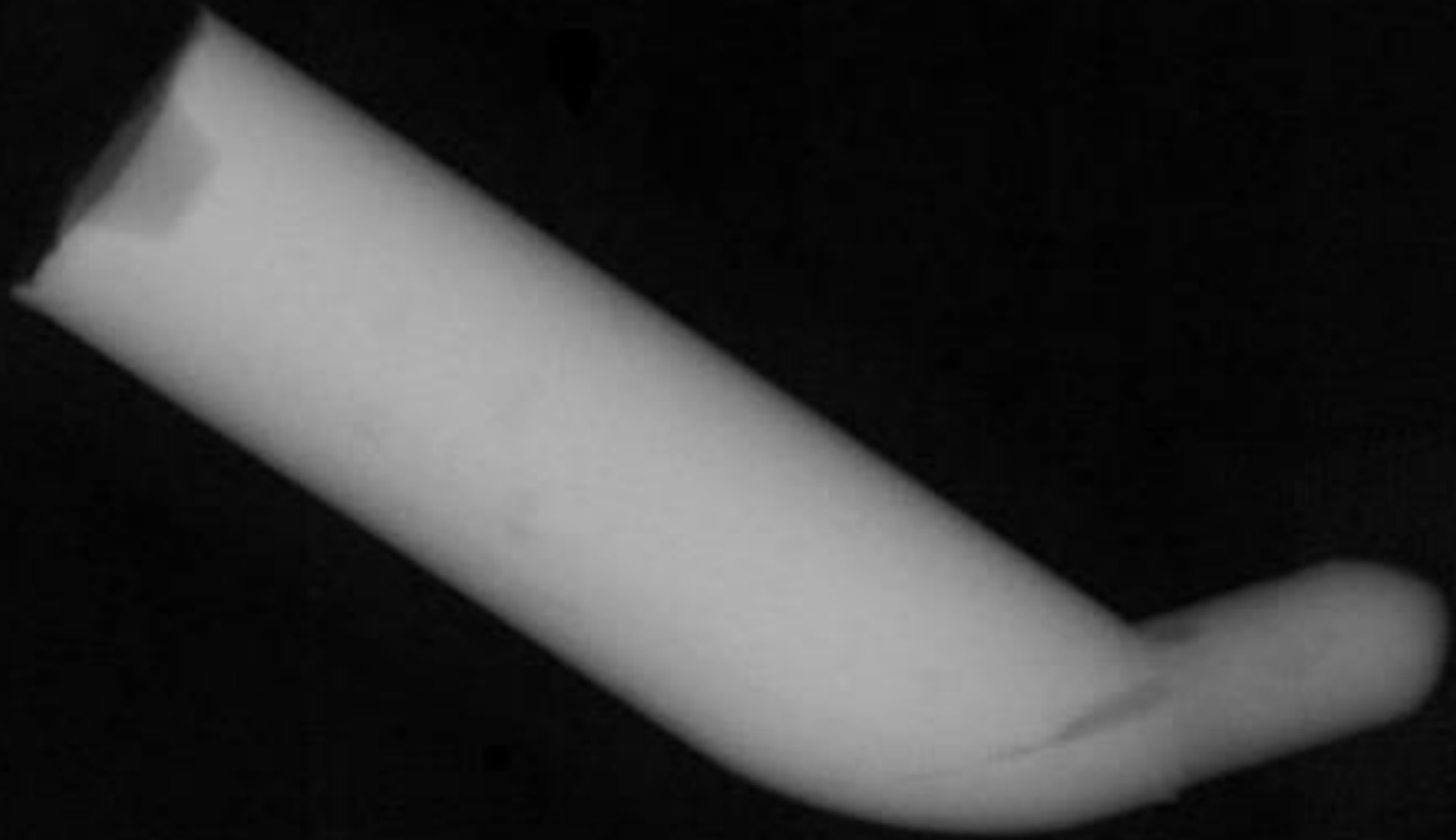


DENTAL LIGHT-CURED RESTORATIVE COMPOSITE
CLEARFIL MAJESTY™ ES-2
Classic
(Body Shades)









Lets' talk about my last week...actually my whole week

A couple flew from southern California to Tacoma WA for Bioclear treatment

Mrs. Smith



Mr. Smith



What is the standard fee to rejuvenate this couple's smiles with Bioclear? (32 teeth altogether)

Last Monday: Day 1 seven am. Husband is in the chair. He does **not** want thick teeth and I agree. His teeth are already prominent.











Kuraray Majesty ES Classic B-1 shade

This is considered a “match” or non-color-upgrade case



Day 3 noon. Time for the wife to get in the chair

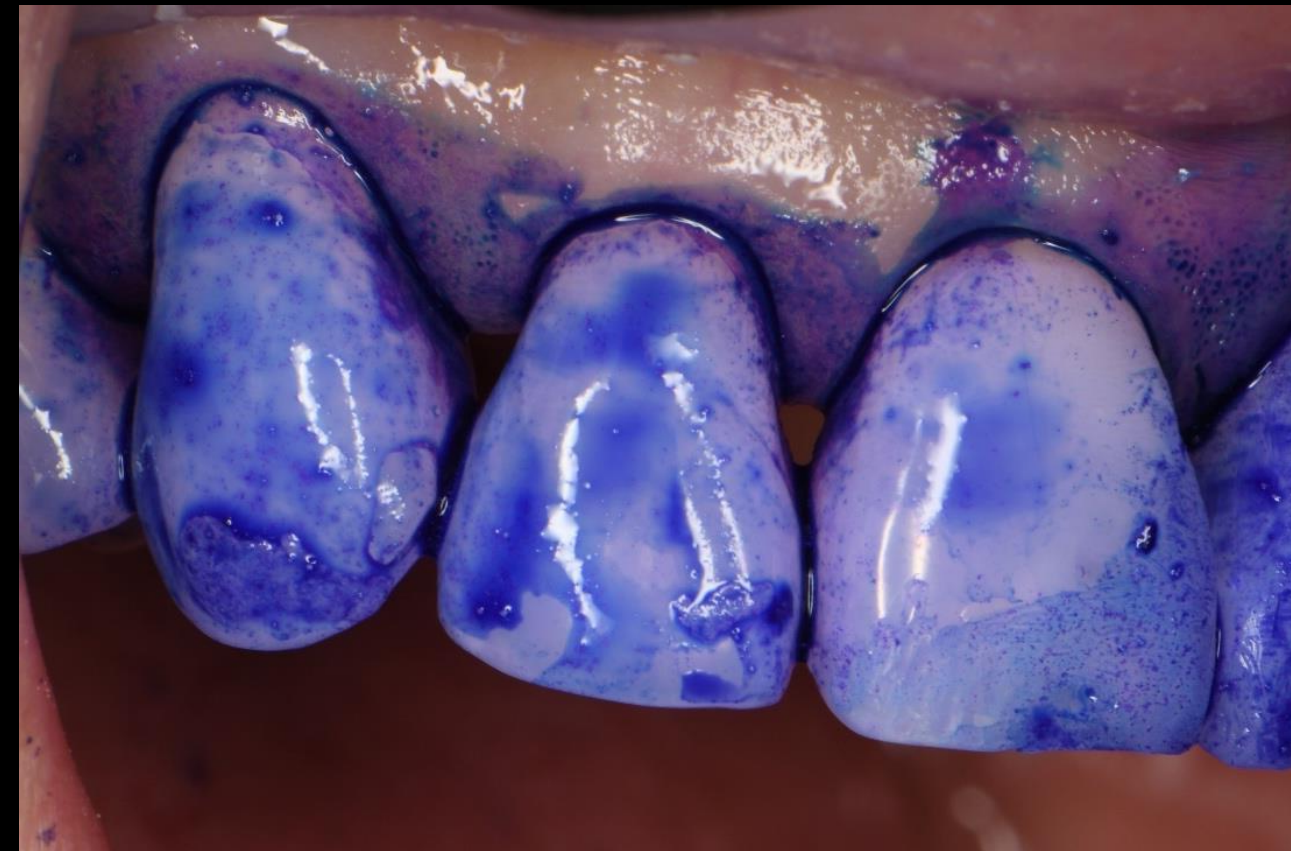






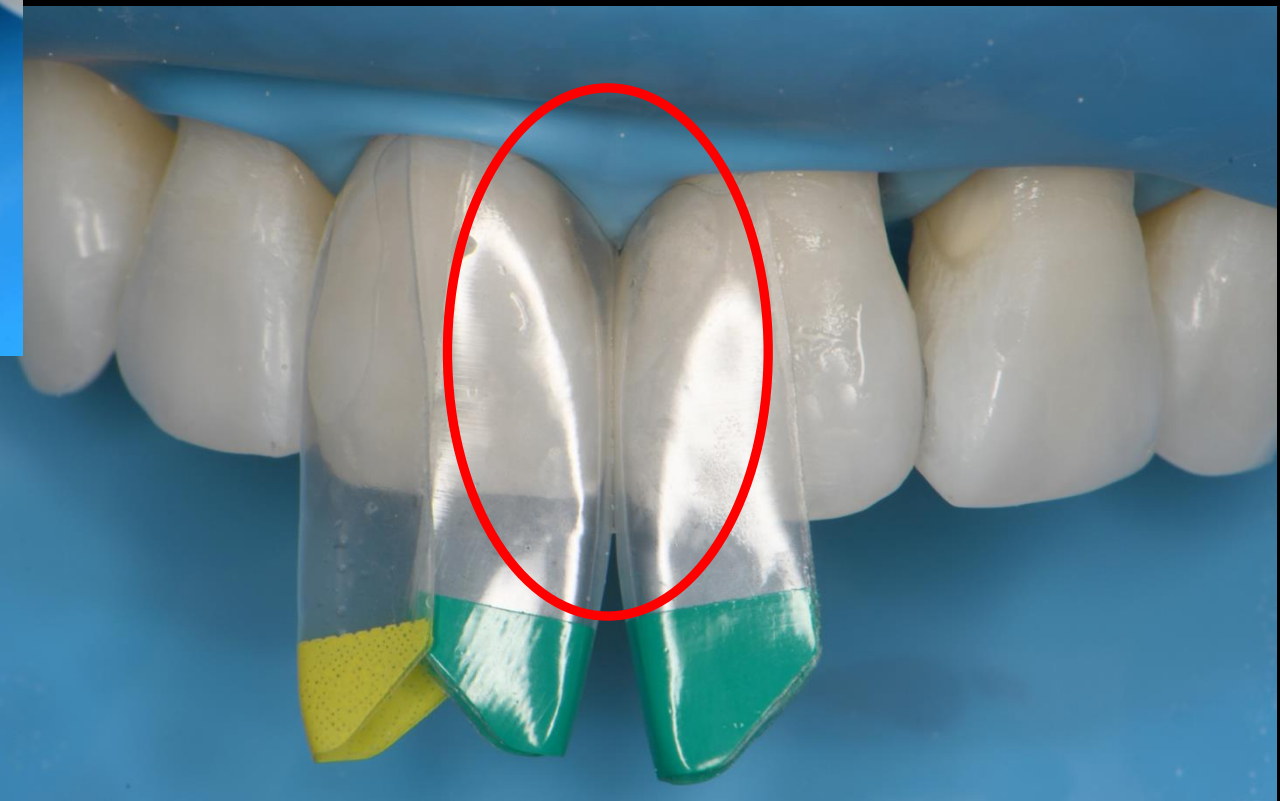




















End of
day three



Day four

7:00 a.m.













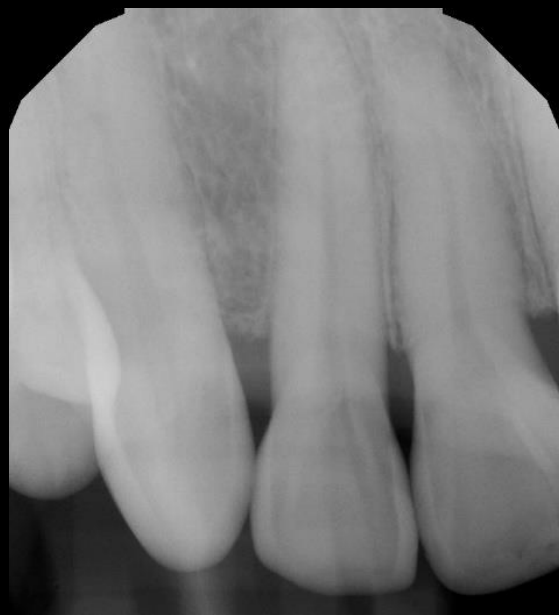


Day four 3:00 p.m.



Kuraray Majesty ES Classic EW (extra White) shade
This is considered a color-upgrade case





Mrs. Smith



Mr. Smith



What is the standard fee to rejuvenate this couple's smiles with Bioclear? (32 teeth altogether)



Case by Dr Ayman Mohammed















Case by Dr Ahmed Al Jaber





















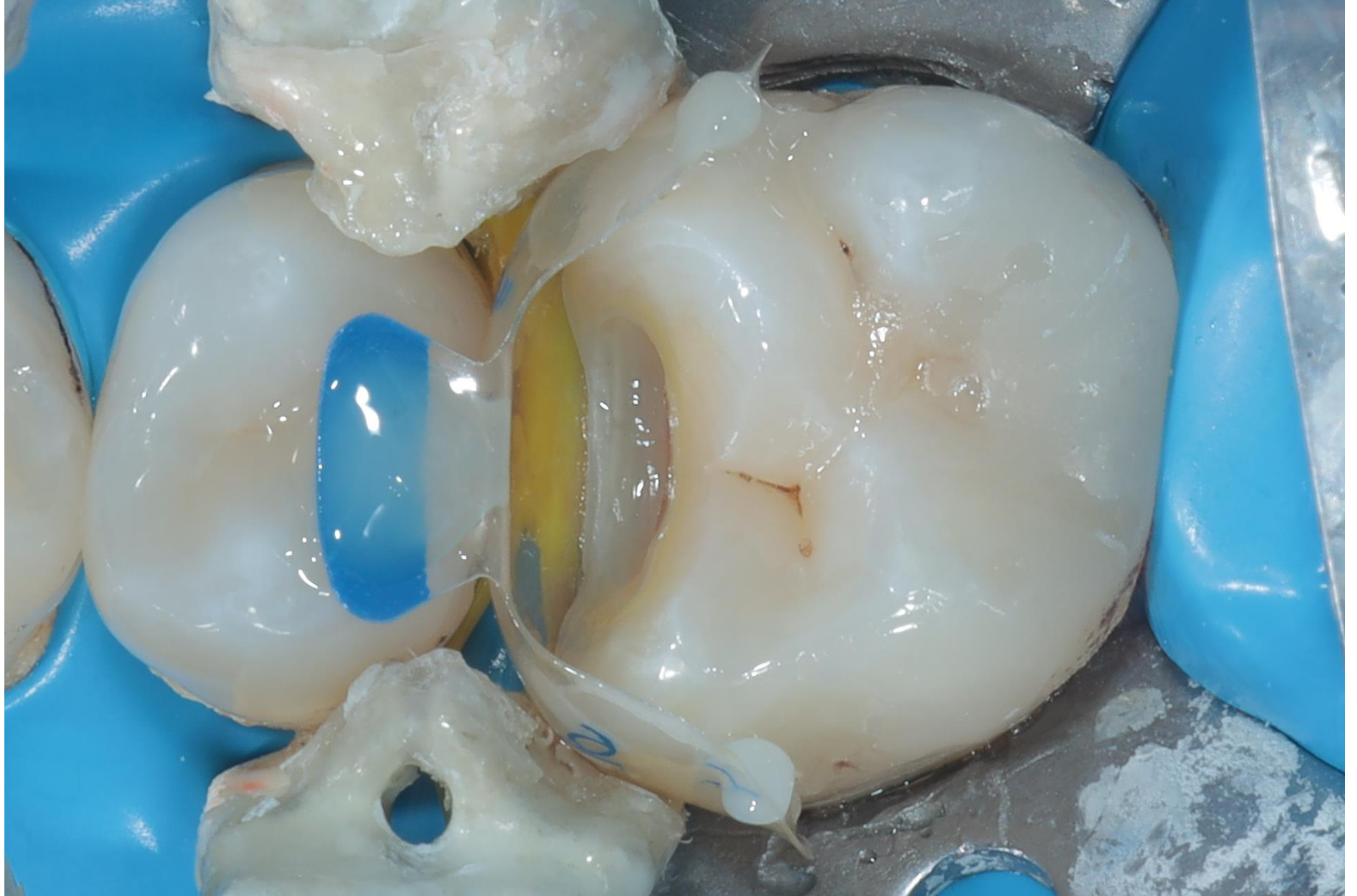






















For a copy of today's presentation,
Learning Center info or the essential
Learning Center Library

