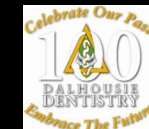




# BIOCLEAR LEARNING CENTER

Tacoma USA · Solihull UK  
Varberg Sweden · Cairo Egypt  
Syracuse Italy · Taubate Brazil  
Livermore CA (Bioclear pediatrics)  
Seoul Korea · Madrid/Barcelona  
Sydney Australia · Provence France

# Dental schools/GPR integrating the Bioclear Method

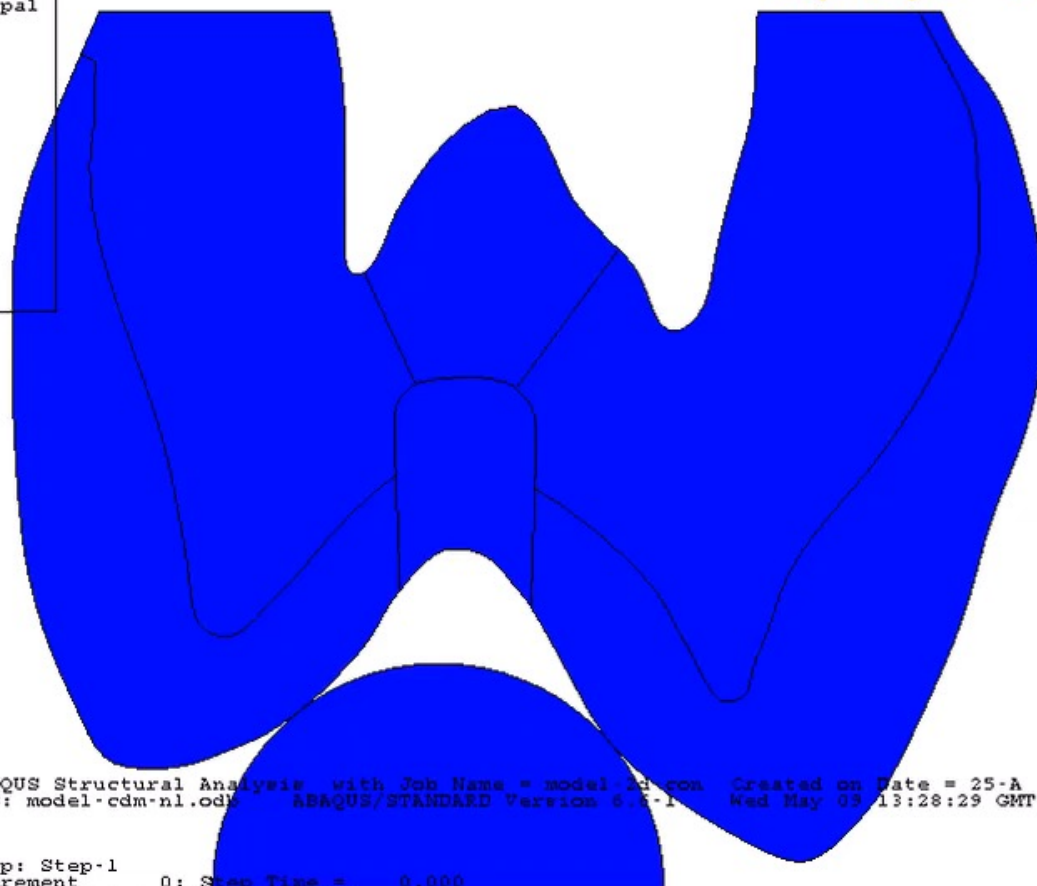
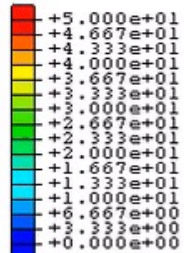


For a copy of today's presentation,  
Learning Center info or the essential  
Bioclear Library



For a copy of today's presentation,  
Learning Center info or the essential  
Bioclear Library, email us at:

[lectures@bioclearmatrix.com](mailto:lectures@bioclearmatrix.com)

S, Max. Principal  
(Avg: 75%)2  
3

ABAQUS Structural Analysis with Job Name = model-nl-con Created on Date = 25-A  
 ODB: model-cdm-nl.odb ABAQUS/STANDARD Version 6.6-1 Wed May 05 13:28:29 GMT Daylight

Step: Step-1  
 Increment 0: Step Time = 0.000  
 Primary Var: S, Max. Principal  
 Deformed Var: U Deformation Scale Factor: +1.000e+01



Traditional Class II: Before



Bioclear Rejuvenation: After

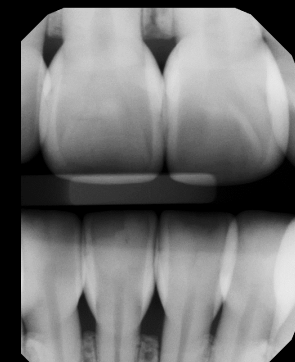
Courtesy Dr. Charlie Regalado

# Modern Approach to Composite Restorations

Posterior  
Restoration



Black Triangle



# Modern Method for Composite Restorations

## Bioclear Anatomic Matrices

- Anterior & Posterior Matrices designed to mimic or improve nature

## Preparation Design

- I.C.E. Infinity edge, Compression based, Enamel driven
- Maximizes enamel involvement by going "around the tooth"

## Biofilm Removal

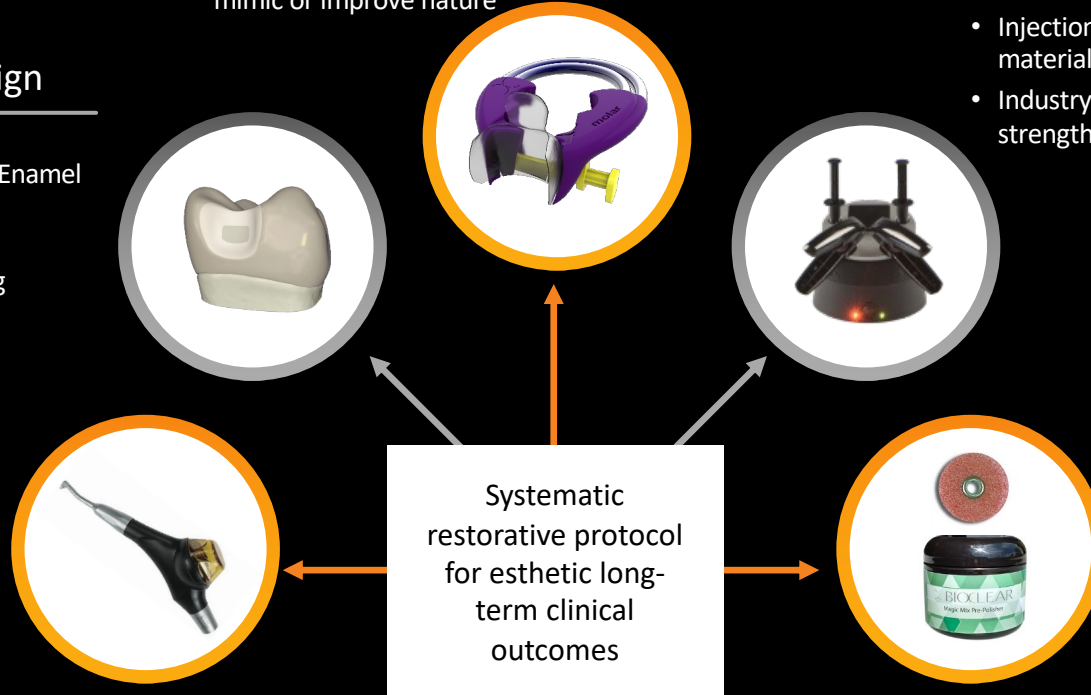
- Bioclear Blaster removes biofilm before bonding
- Allows bonding to uncut enamel
- Allows infinity edge margins

## Injection Mold Composite

- Injection mold warmed Restorative materials
- Industry leading polish, esthetic, strength & wear

## Rock Star Polish

- 3M™ Sof-Lex™ XT coarse discs for reduction
- "Rock Star" polish with Bioclear Magic Mix & RS Polisher



# The Matrix and Method Matter



Bioclear Method



Tragic Outcome

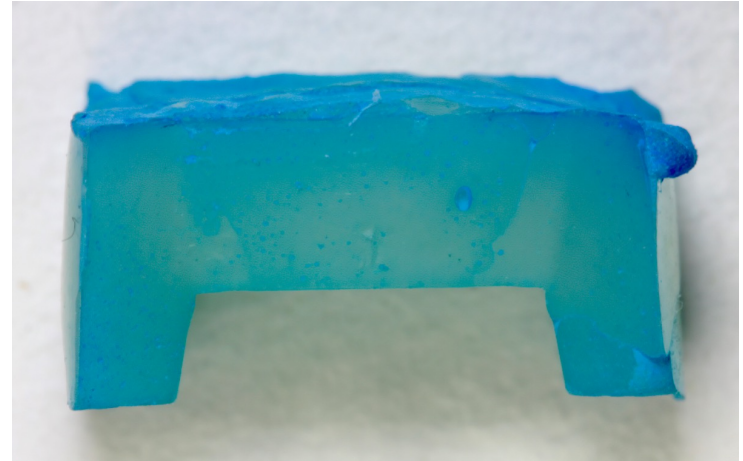
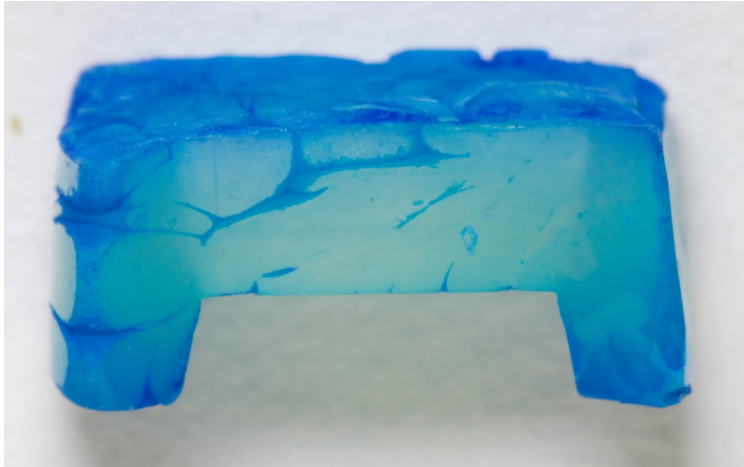
Let's go back to 2007...

“Dr. Clark, aren't we supposed to layer everything?”

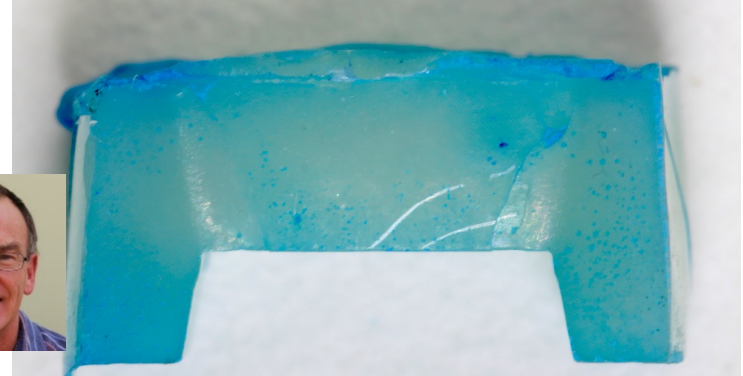
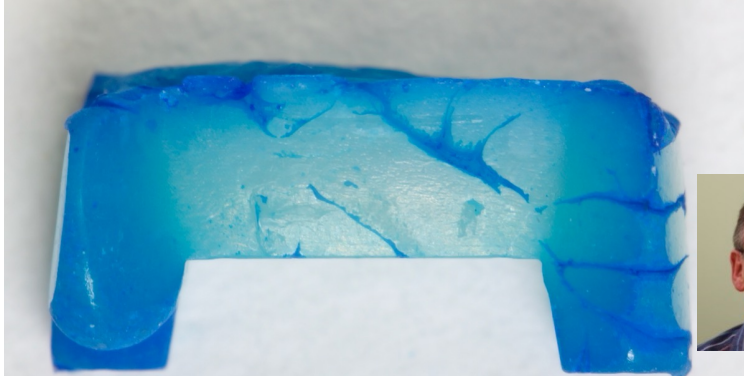
# Hand-Packed and Layered

# Monolithic and Injection-Molded

Dr. #1



Dr. #2



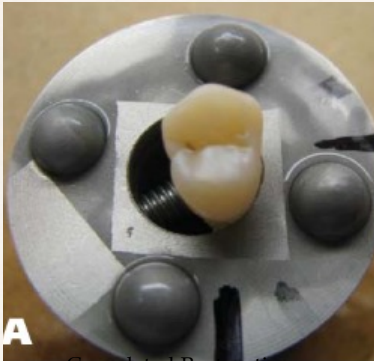
Courtesy Dr. Richard Price

Is layering a good thing or a bad thing?

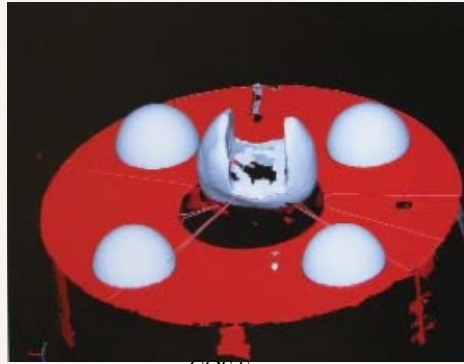
Does layering relieve stress and reduce microleakage? **NO**

# October 2011 JADA

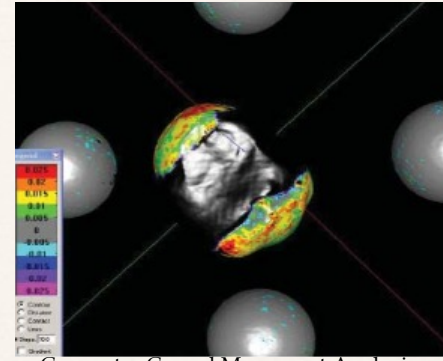
Cuspal deflection and depth of cure in resin-based composite restorations filled by using bulk, incremental and transtooth-illumination techniques



A Completed Restoration



COS Scan



Computer Cuspal Movement Analysis

**"Conclusions:** Cuspal deflection was not affected by filling techniques."

"Filtek Supreme Plus had lower curing values below a depth of 2 mm."

**"Clinical Implications.** When using resin-based composite restorative materials, clinicians should be more concerned about the effect of filling techniques on curing depth than about how these techniques affect shrinkage stresses."

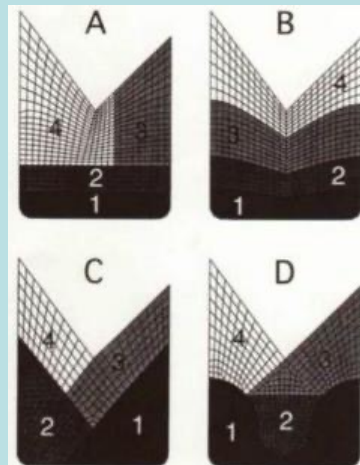
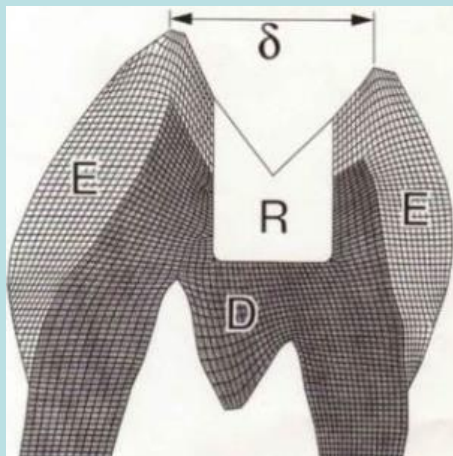
## Does an incremental filling technique reduce polymerization shrinkage stresses?

Versluis A, Douglas WH, Cross M, Sakaguchi RL.

Minnesota Dental Research Center for Biomaterials and Biomechanics, University of Minnesota, Minneapolis 55455, USA.

### Abstract

It is widely accepted that volumetric contraction and solidification during the polymerization process of restorative composites in combination with bonding to the hard tissue result in stress transfer and inward deformation of the cavity walls of the restored tooth. Deformation of the walls decreases the size of the cavity during the filling process. This fact has a profound influence on the assumption—raised and discussed in this paper—that an incremental filling technique reduces the stress effect of composite shrinkage on the tooth. Developing stress fields for different incremental filling techniques are simulated in a numerical analysis. The analysis shows that, in a restoration with a well-established bond to the tooth—as is generally desired—incremental filling techniques increase the deformation of the restored tooth. The increase is caused by the incremental deformation of the preparation, which effectively decreases the total amount of composite needed to fill the cavity. This leads to a higher-stressed tooth-composite structure. The study also shows that the assessment of intercuspal distance measurements as well as simplifications based on generalization of the shrinkage stress state cannot be sufficient to characterize the effect of polymerization shrinkage in a tooth-restoration complex. Incremental filling methods may need to be retained for reasons such as densification, adaptation, thoroughness of cure, and bond formation. However, it is very difficult to prove that incrementalization needs to be retained because of the abatement of shrinkage effects.



# Studies do not support layering to mitigate polymerization stress

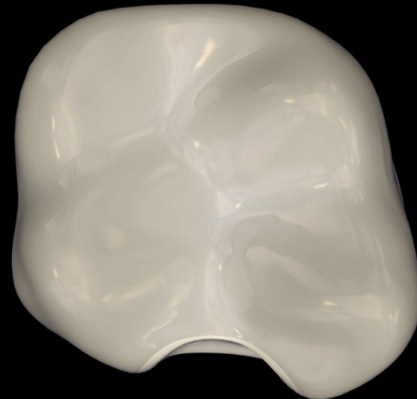
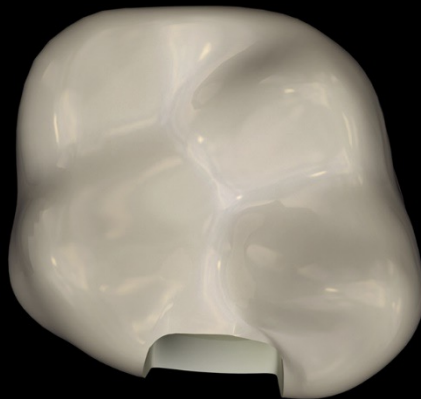
---

---

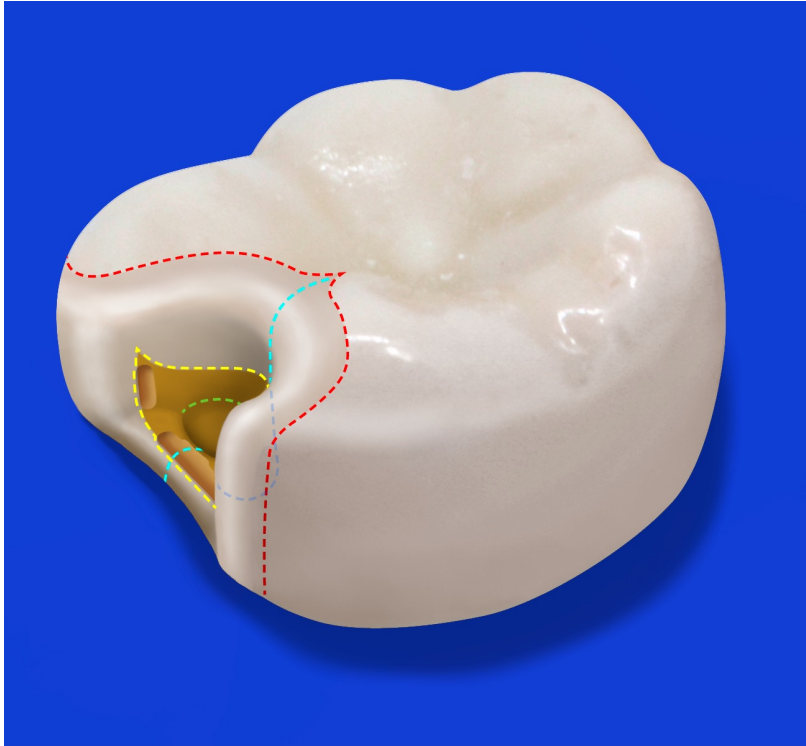
- ◆ Does Incremental Filling Technique Reduce Polymerization Shrinkage Stresses?  
Versluis A, et.al., J Dent Res March 1996; 75(3): 871-878
- ◆ An In Vitro Study of the Effect of Restorative Technique on Marginal Leakage in Posterior Composites  
Neiva IF, et.al.; Oper Dent 1998, 23:282-289
- ◆ Microleakage and adaptation of Class II packable resin-based composites using incremental or bulk filling techniques  
Gallo JR, et.al., Am J Dent 2000; 13: 205-208
- ◆ The Effects of Adhesive Thickness on Polymerization Contraction Stress of Composite  
Choi KK, et.al., J Dent Res 2000; 79(3): 812-817
- ◆ Microleakage of Posterior Packable Resin Composites with and without flowable liners  
Leevailoj C, et.al., Oper Dent 2001; 26: 302-307
- ◆ Marginal adaptation of Class II resin composite restorations using incremental and bulk placement techniques: and ESEM study  
Idriss S, et.al., J Oral Rehab 2003; 30: 1000-1007
- ◆ A reappraisal of the incremental packing technique for light cured composite resins  
Rees JS, et.al., J Oral Rehab 2004; 31: 81-94
- ◆ Cuspal deflection and depth of cure in resin-based composite restorations filled by using bulk, incremental and transtooth-illumination techniques  
Carlos E. Campodonic, DDS 2011, October 2011 JADA

# Modern Class II Cavity Preparation Design

# The Prep?



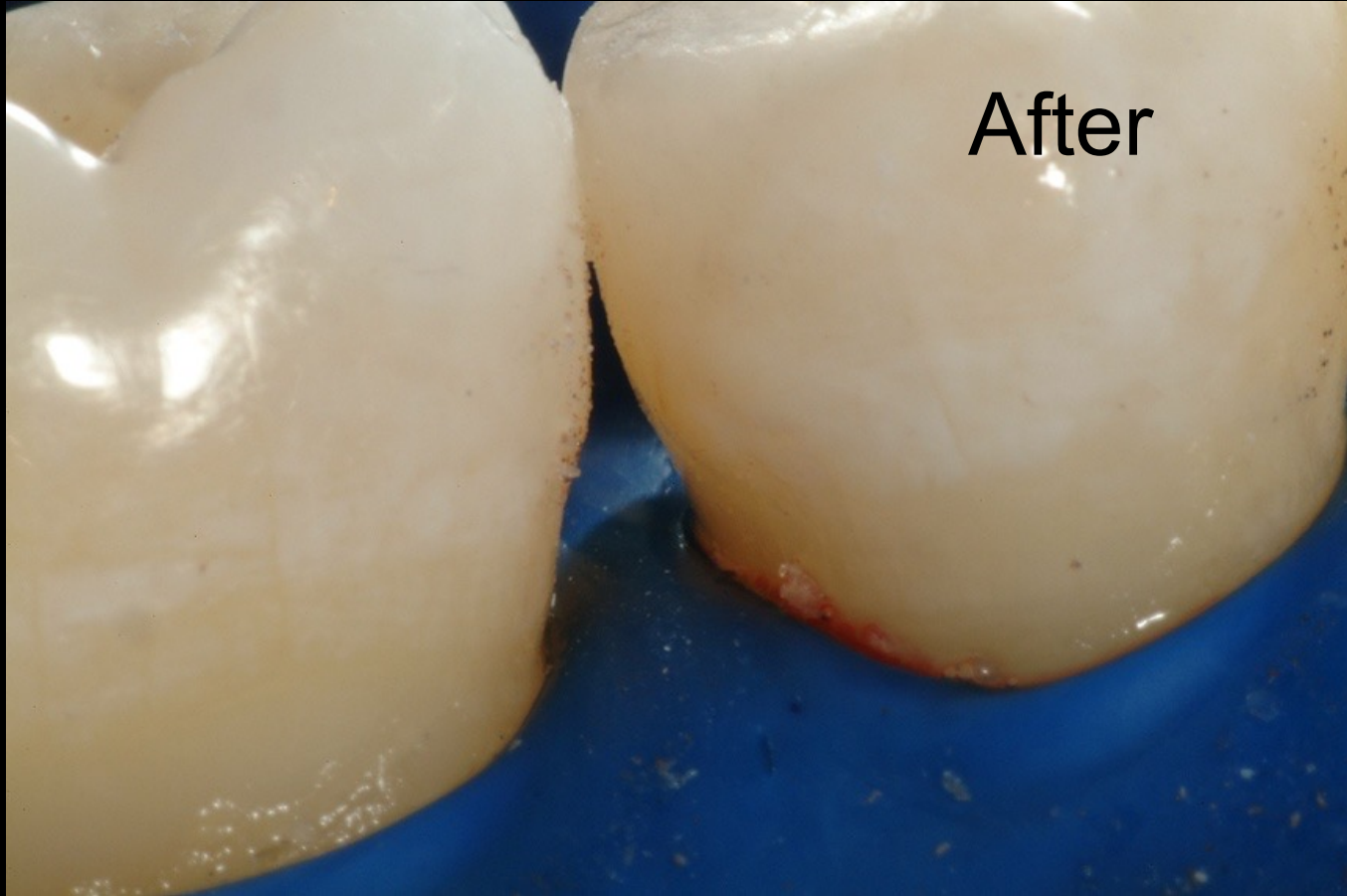
# Final views of completed Bioclear Class II Preparation.

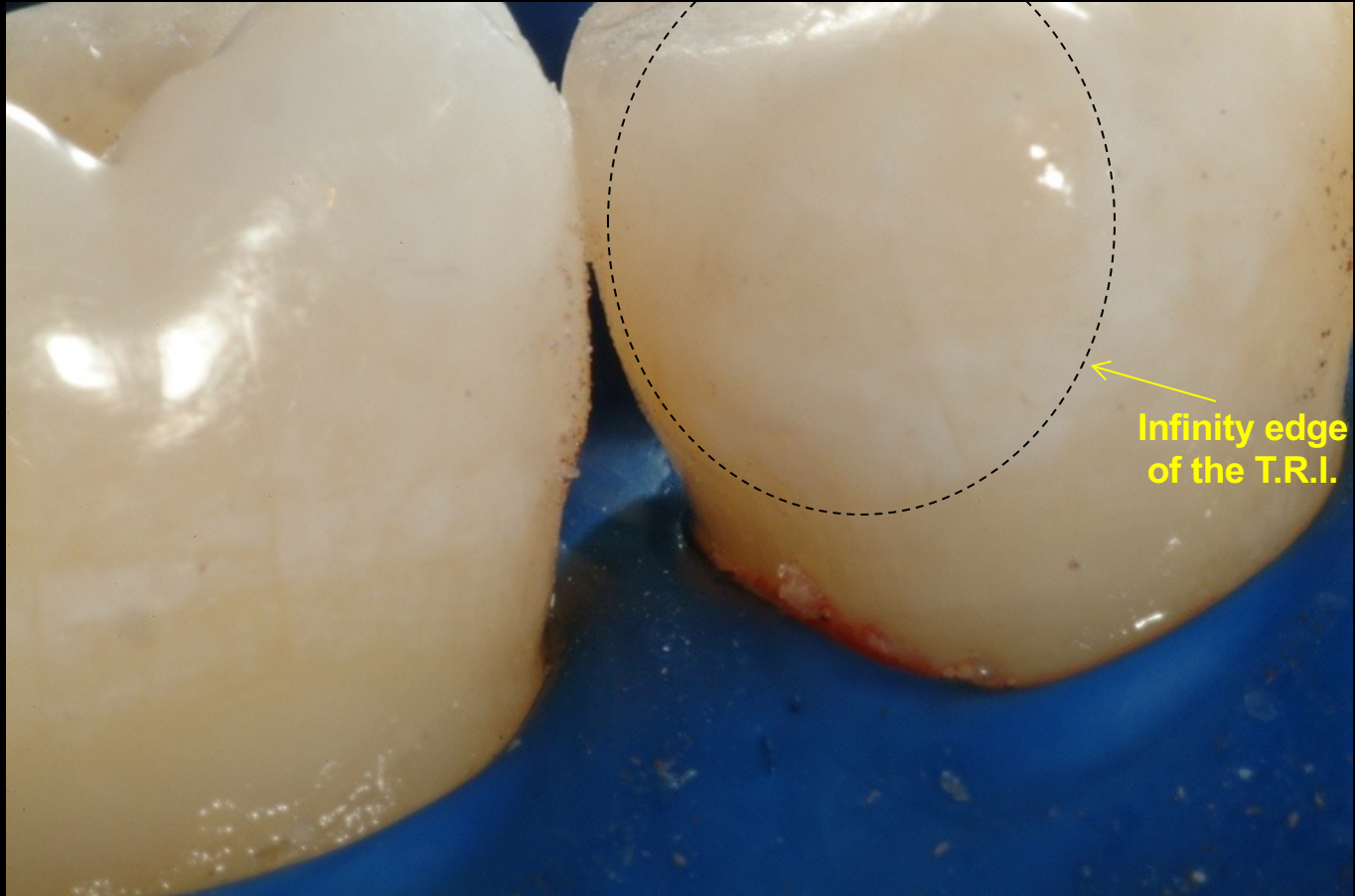




before

# The Bioclear method





Infinity edge  
of the T.R.I.

# The Bioclear Injection Molding Approach



Failing composite;  
traditional preparation



Re-Restored using the  
Bioclear Evolve System and Method

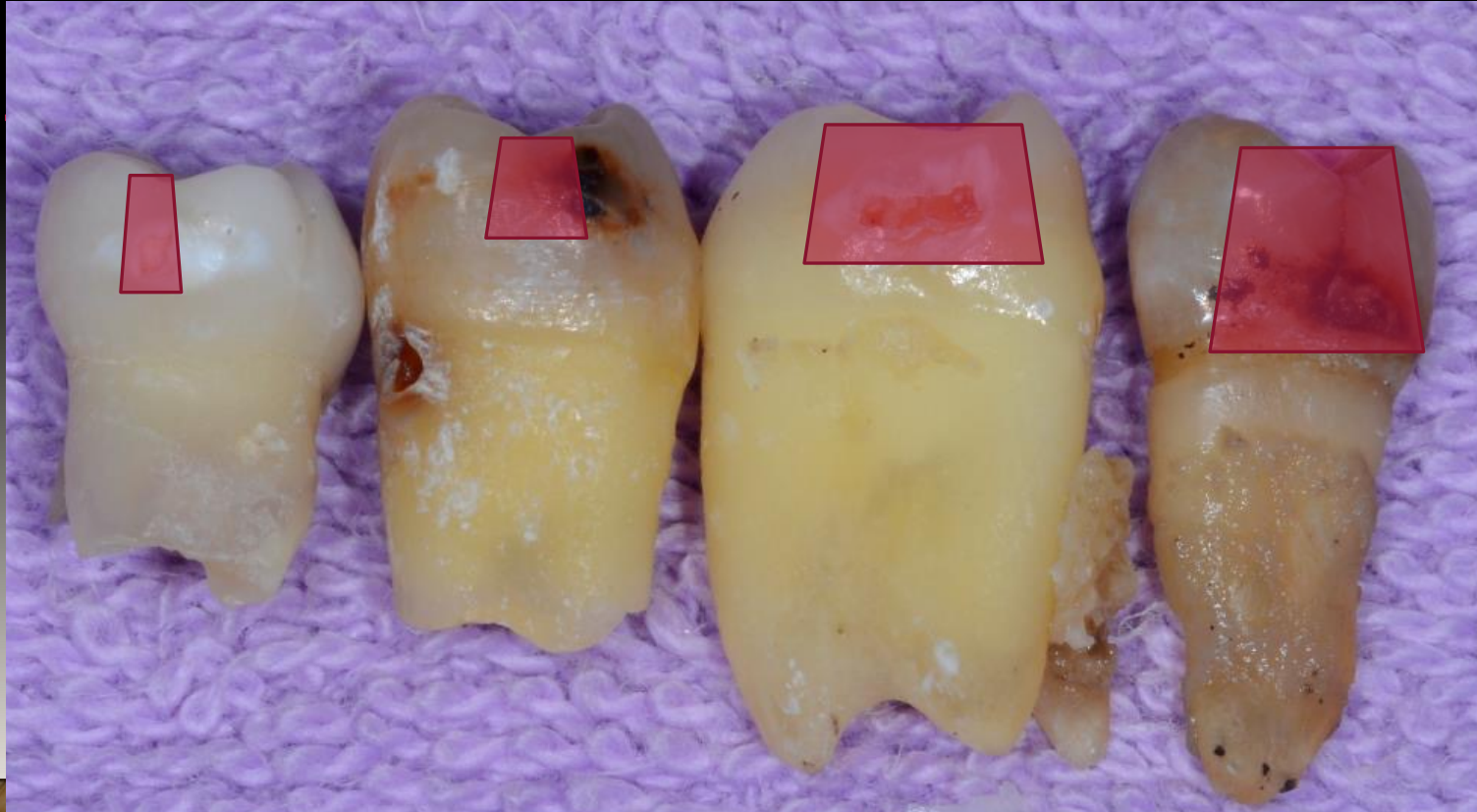
# CAVITATION VS APRISMATIC ENAMEL



WHY WOULD WE PUT A MARGIN IN THE *DISEASE ZONE*?



# FOUR WAYS TO CUT A TRAGIC SLOT PREP



LET'S PUT IT ALL TOGETHER WITH EVOLVE



# The Bioclear Evolve All In One Kit





















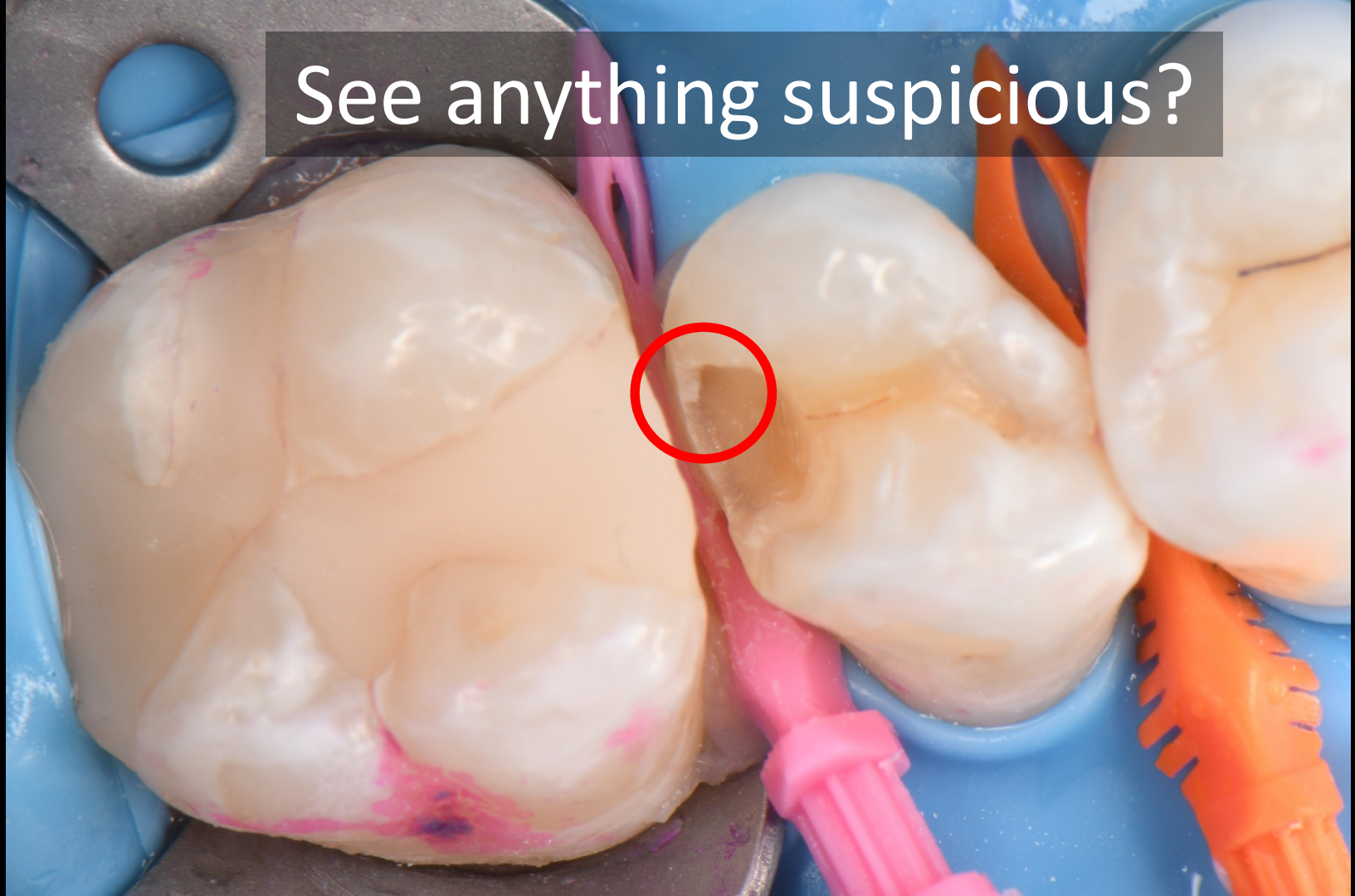








See anything suspicious?







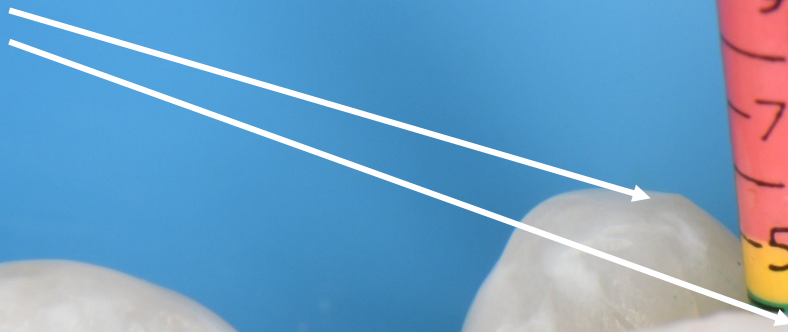








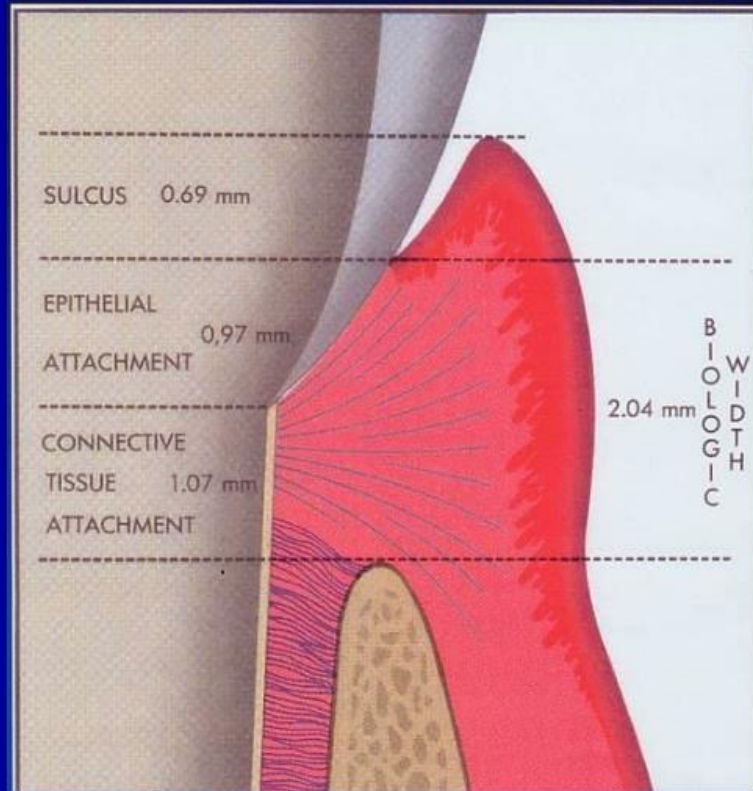
What's my  
reference?

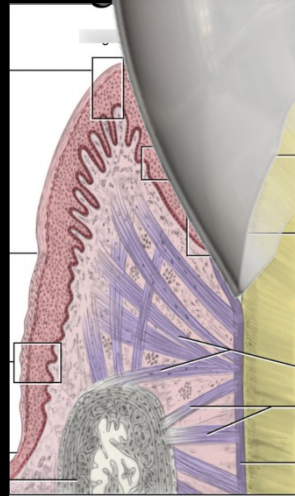


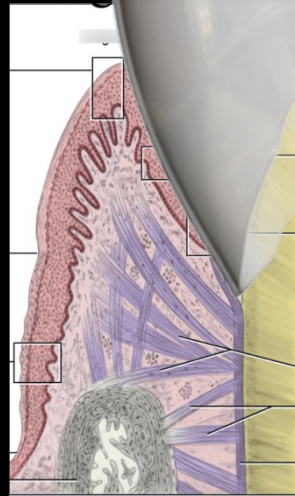
What's my  
reference?











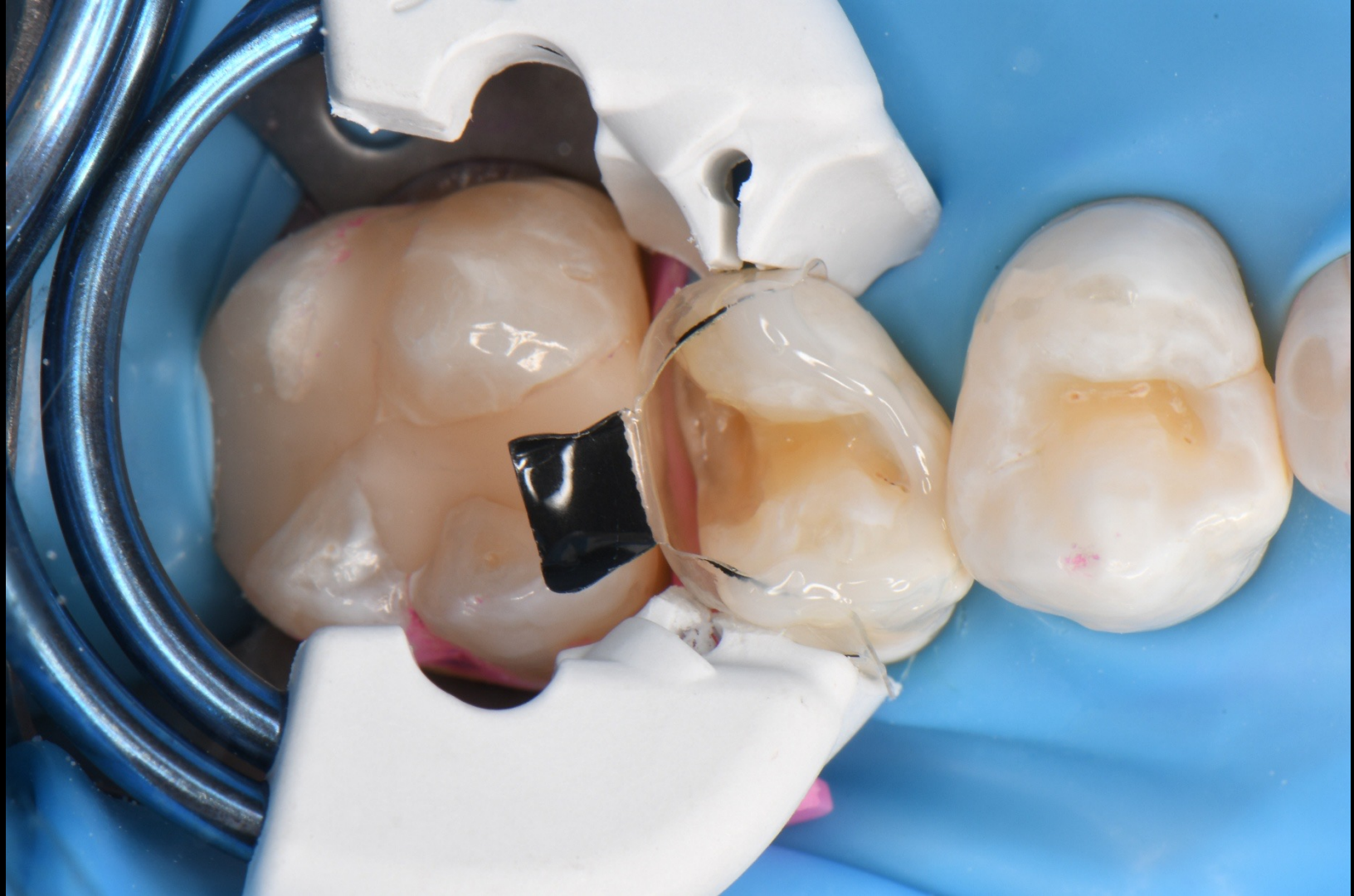


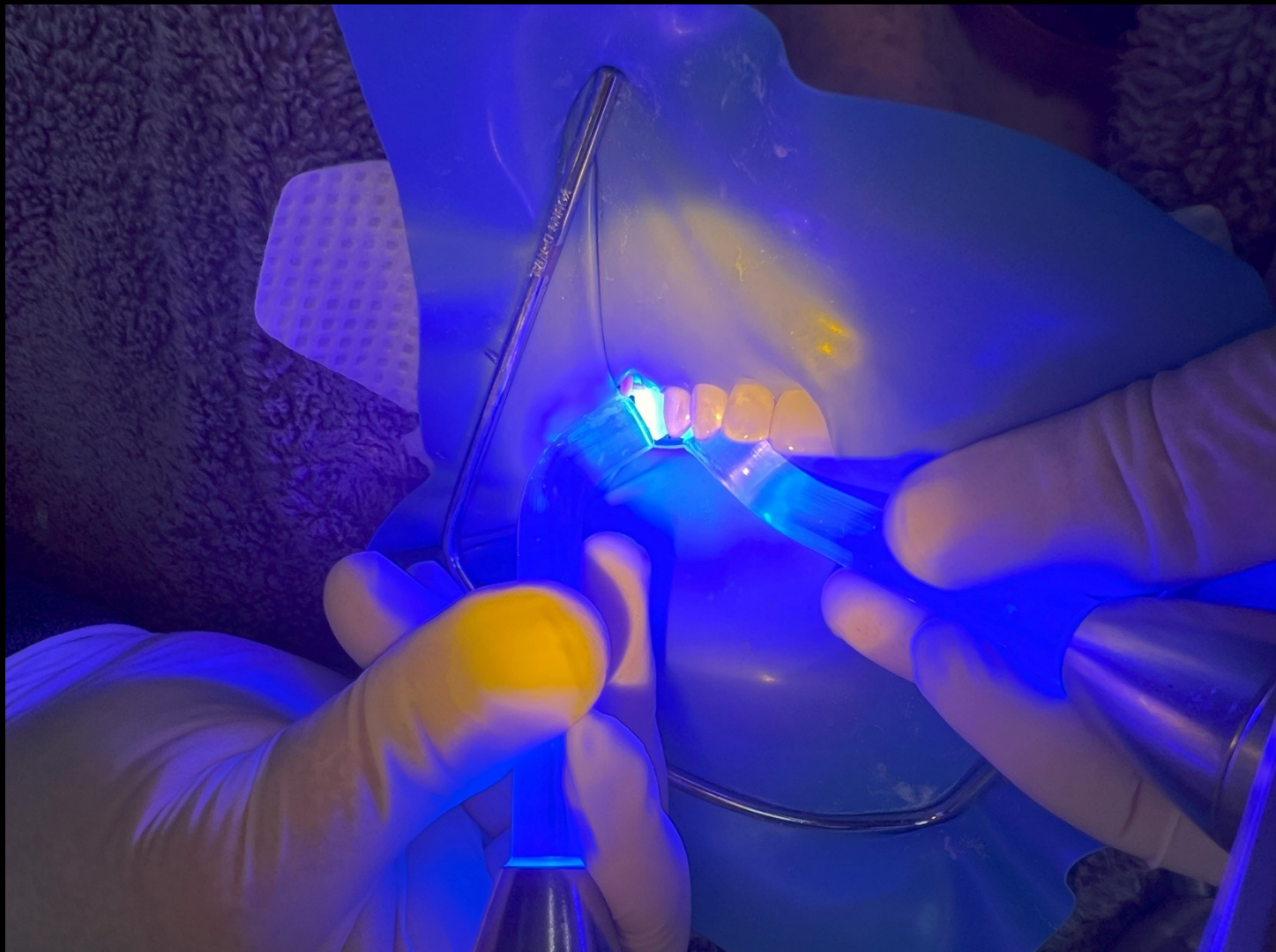
















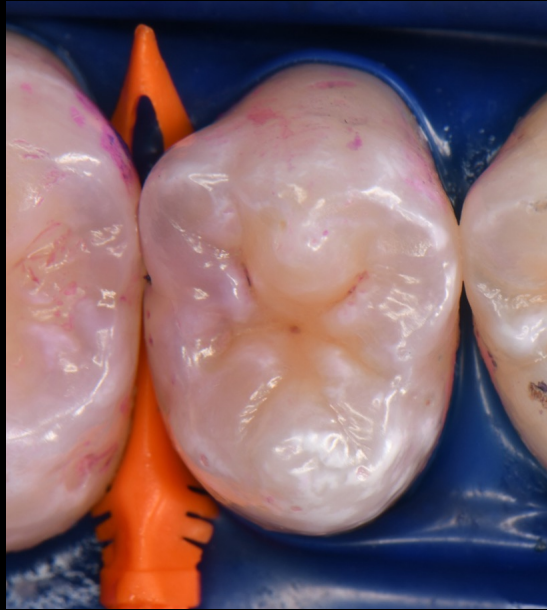






# Similar Case: Pre-op, post op, and 3 year follow up

∞ BIOCLEAR



**Immediate post op**



**3 year follow up**





# Step by Step Guide for Injection Molded Class II



# Step by Step Guide for Injection Molded Class II

# The Bioclear Evolve All In One Kit



Are all  
Separators  
Equal?

**NO!**



Stretched to 20mm ONCE!!!





And now most of  
the power is  
permanently lost

Once the yield of the metal/shape is reached, the metal undergoes plastic deformation

Stretched to 20mm Twenty Times

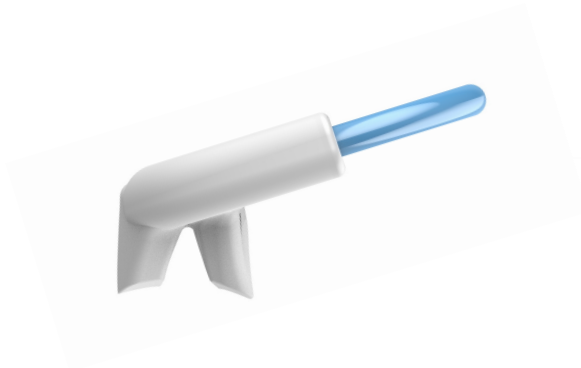
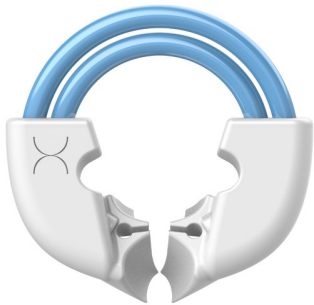
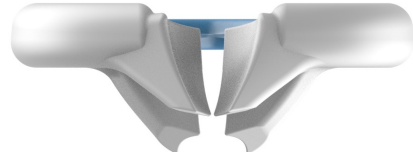


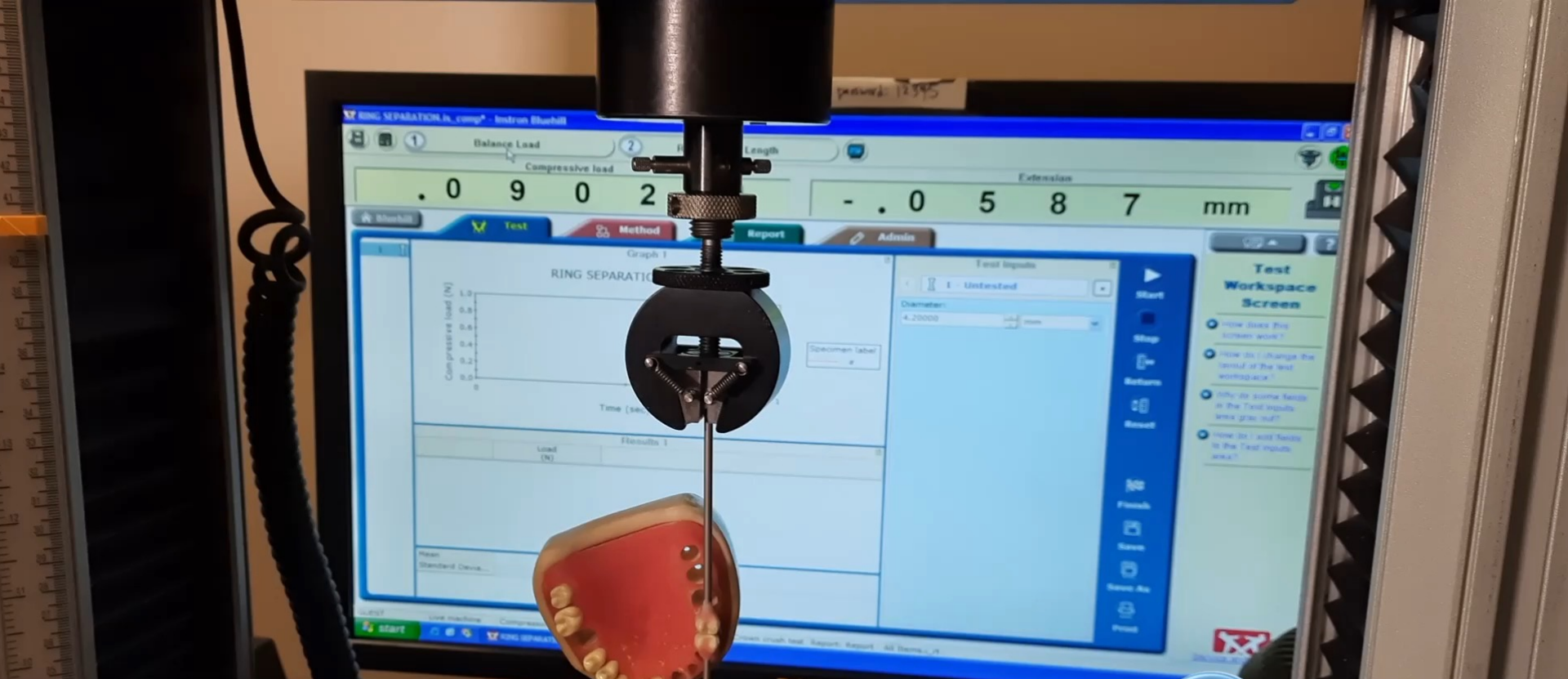
Stretched to 20mm Twenty Times



# TwinRing Universal

∞ BIOCLEAR





### Nate Lawson DMD PhD

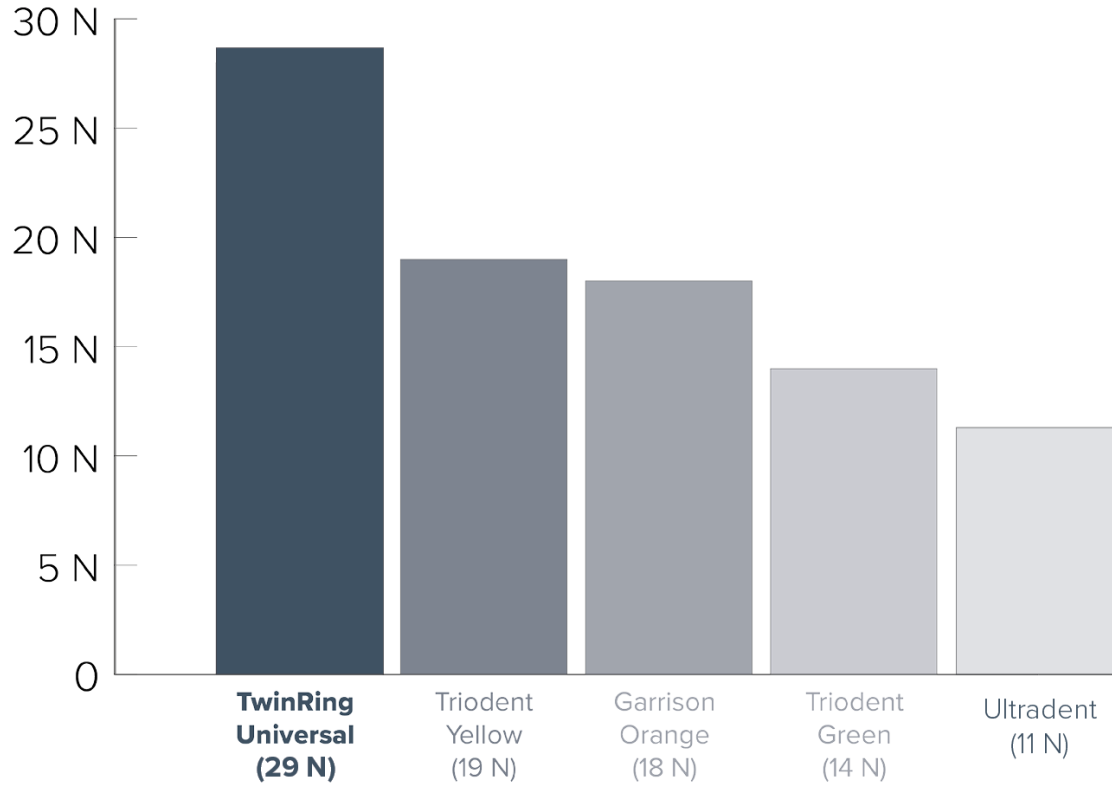
Director of the Division of Biomaterials and Pranit Bora. BDS, MDS.

Resident, Division of Biomaterials UAB School of Dentistry



TwinRing Universal  
28 N

# TwinRing Universal Instron Comparison



Note: Rings tested are not new and some rings stretch out quickly and lose up to half of their power after multiple uses. 1N = 1kg (m/s/s)



# EVOLVE --- MATRIX

Premolar



Molar



EVOLVE  
MATRIX

# Black Premolar Evolve

BIOCLEAR



5 Sizes

5mm

6mm

7mm

8mm

10mm

- Curved profile
- Normal width for a premolar



## 5 Sizes

5mm  
6mm  
7mm  
8mm  
9mm

- Curved profile
- Normal width



3 Sizes

6mm

7mm

9mm

- Curved/straight profile
- Wider width

Composite  
Heating: Trend  
or the future of  
placing the  
material?

Composite Heater pre-set  
to 155° F



# Conclusions

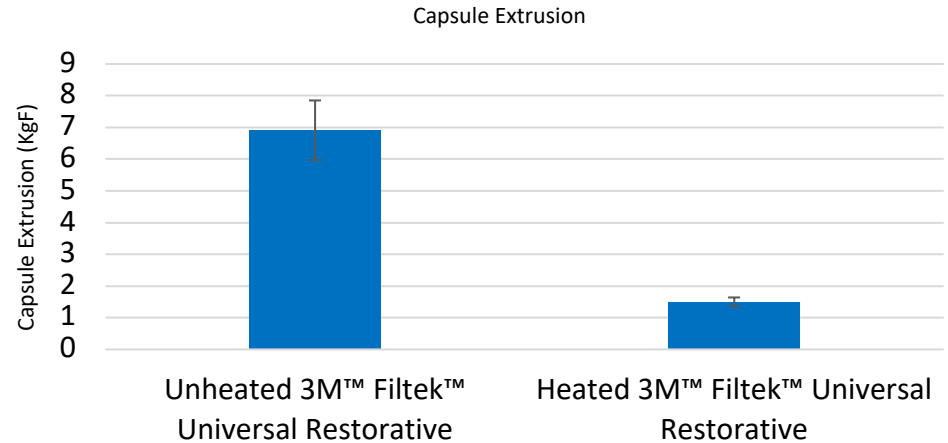
- Preheating a syringe of Filtek™ Bulk Fill Posterior to 60 °C for twenty 1 hour increments does
  - NOT harm mechanical properties such as
    - Diametral tensile strength
    - Flexural strength
  - NOT harm cure properties such as
    - Depth of cure
    - Cusp deflection (polymerization shrinkage stress)
  - NOT harm esthetic properties such as
    - Color and opacity
    - Polish retention

From: Does Preheating a Dental Composite Degrade its Post-Cure Properties?  
T.D. Dunbar et al., *J Dent Res* 95 (Spec Iss A):952, 2016 ([www.iadr.org](http://www.iadr.org)).

# Composite warming

## Why warm?

- Handling preference
- Lowers capsule extrusion force by 75-80%



3M internal data

14% of dentists survey stated they use some type of device to warm their composite prior to placement.

3M Market Research, January, 2018 N=304 Dentists (US, Russia, UK, Brazil, Germany)

# Traditional composite technique



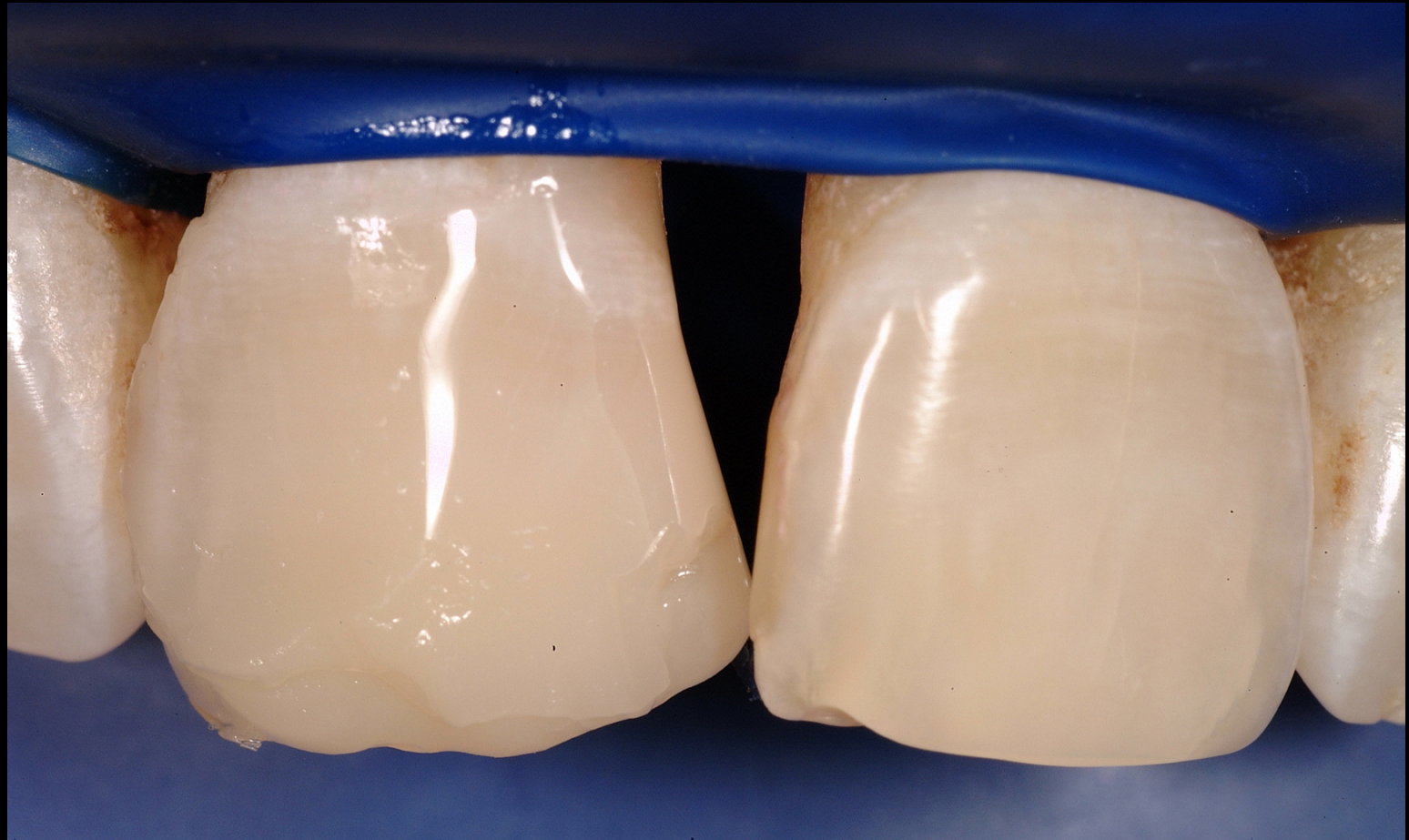
# Traditional composite technique



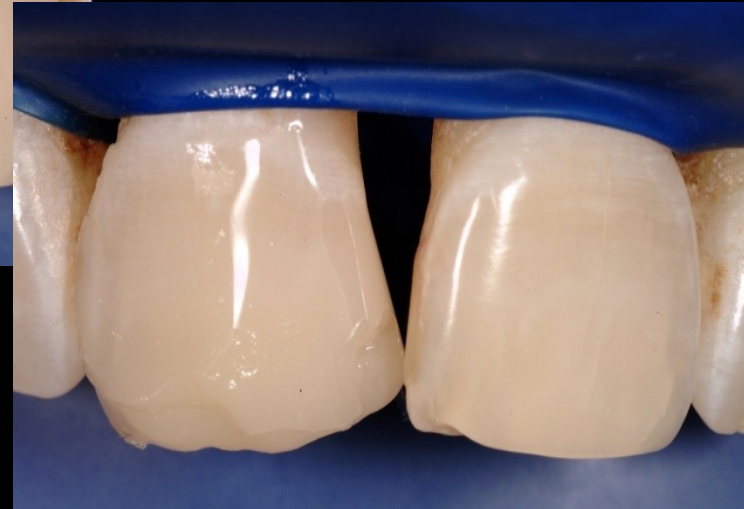
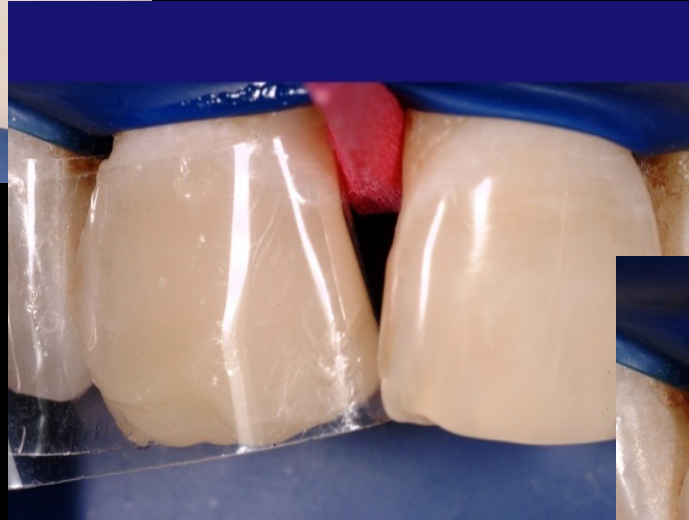
# Traditional composite technique



# Traditional composite technique



# Traditional composite technique



flat matrix + flat wedge = flat tooth

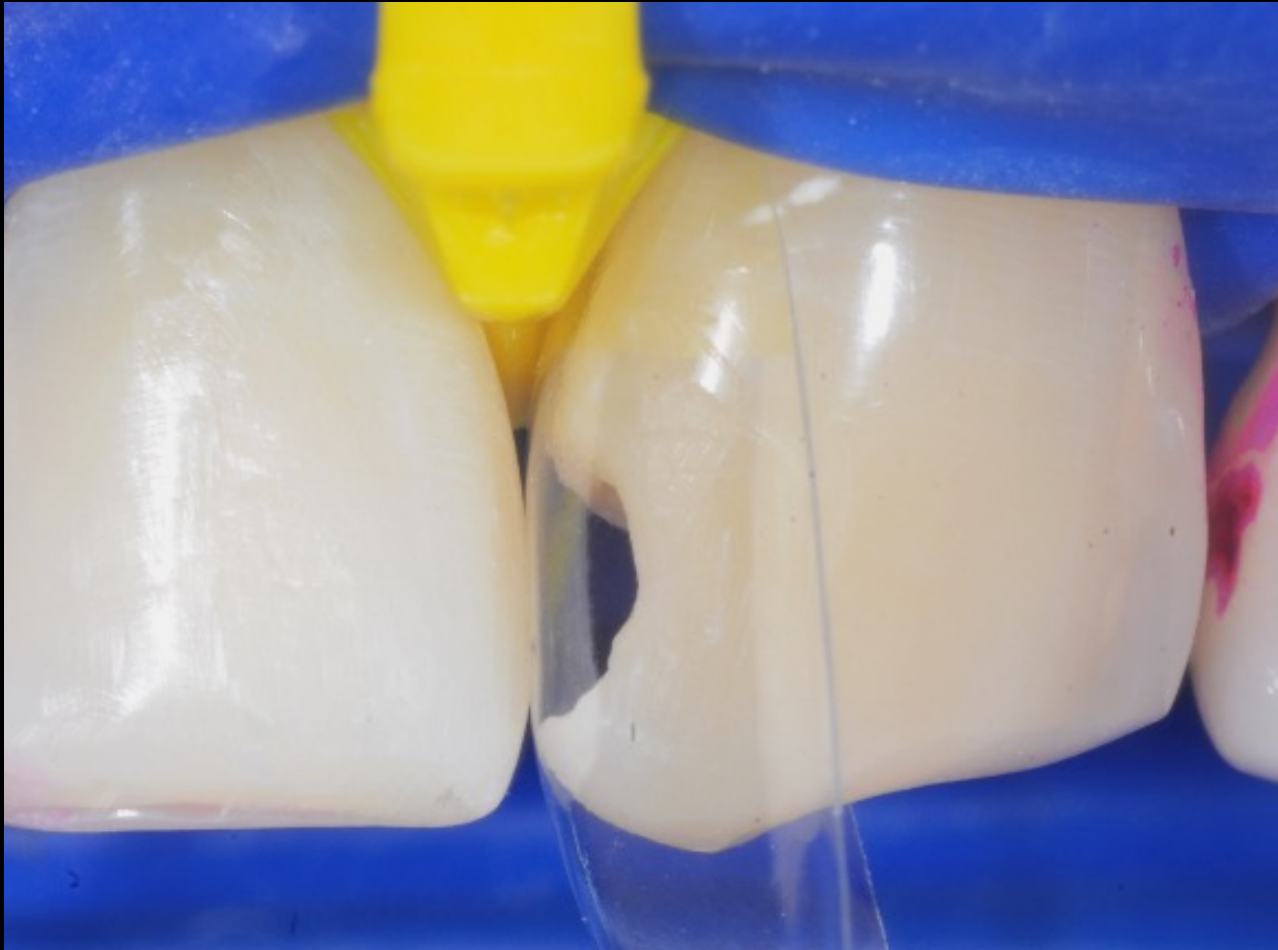
It's 2026. Why are we  
still using flat Mylar and  
flat wedges?

Teeth are not flat

**Teeth are not flat!**

∞ BIOCLEAR





Anatomic  
Bioclear Anterior  
Matrix plus  
Bioclear  
Diamond Wedge  
(yellow-large)

“On” versus “Around”

# Traditional Bonding (on)



# Bioclear Method (around)



# Bioclear Anterior Matrices



## Original Bioclear Matrices

- 9 different matrices
- Treatment of all cases including diastema closure
- Available in regular (50 um) and HD (75 um)



## 360 Veneer Matrix

- 1 Size
- Pre-trimmed
- Specifically designed for injection over molding anterior teeth (Bioclear veneer)



## Black Triangle Matrices

- 8 Matrices
- Color coded
- Specifically designed for black triangle treatment
- Easy to install, small learning curve





**TOOTH & SURFACE SPECIFIC  
MATRIX SYSTEM**  
BY  BIOCLEAR



**140 Anterior Matrices**

#6 through #11 in Mesial & Distal  
Small & Medium Lower Incisor

**75 Wedges**

25 Small Wedges  
50 Medium Wedges

**The next generation  
of anterior matrices:**

We're taking the  
guesswork out of to  
matrix selection

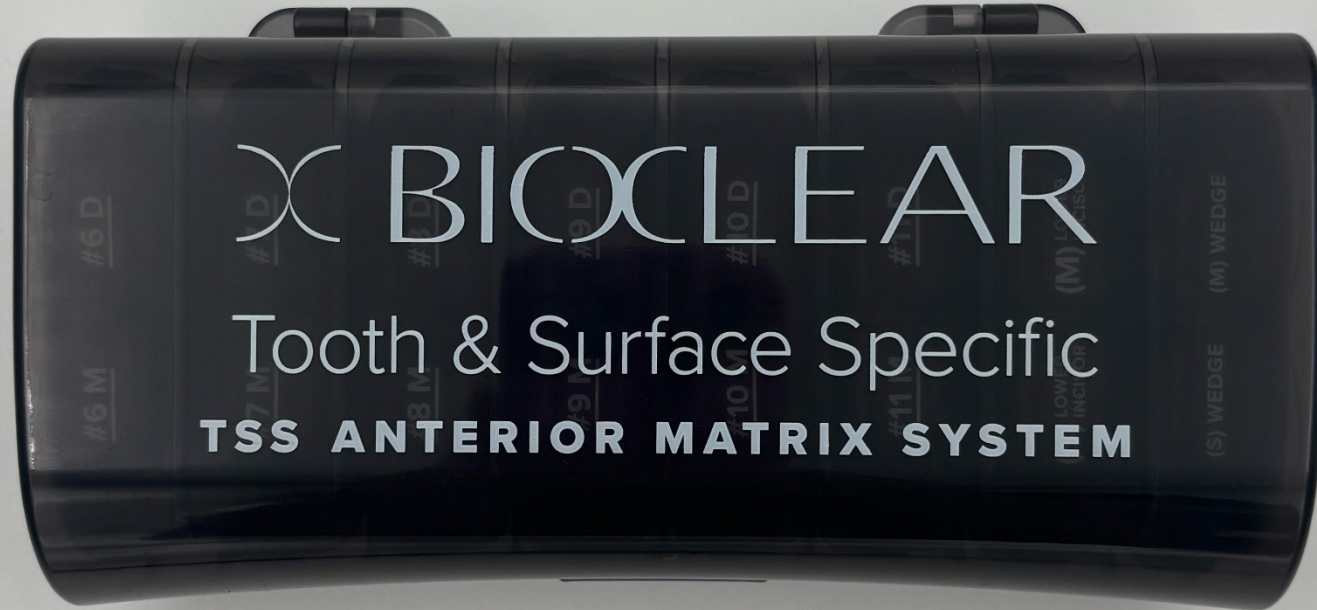


Contact your *Bioclear Sales Rep to Pre-Order*

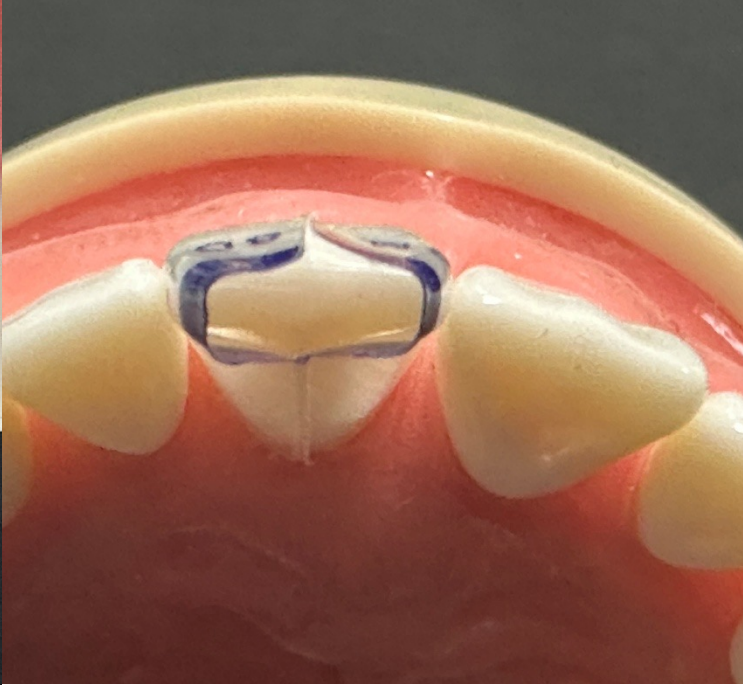
[WWW.BIOCLEARMATRIX.COM](http://WWW.BIOCLEARMATRIX.COM)

1.855.712.5327

This system is for small and large anterior restorations, broken teeth and anterior esthetic veneering when you DO NOT have a black triangle or diastema









**TSS**

TOOTH & SURFACE SPECIFIC  
MATRIX SYSTEM  
BY BICLEAR



**140 Anterior Matrices**  
PS (Prep), M (Mold) & D (Dose)  
Small & Medium Lower Incisor

**75 Wedges**  
25 Small Wedges  
50 Medium Wedges

**The next generation  
of anterior matrices:**

We're taking the  
guesswork out of  
matrix selection



Contact your Biclear Sales Rep to Pre-Order  
[WWW.BICLEARMATRIX.COM](http://WWW.BICLEARMATRIX.COM)  
1.855.712.5327







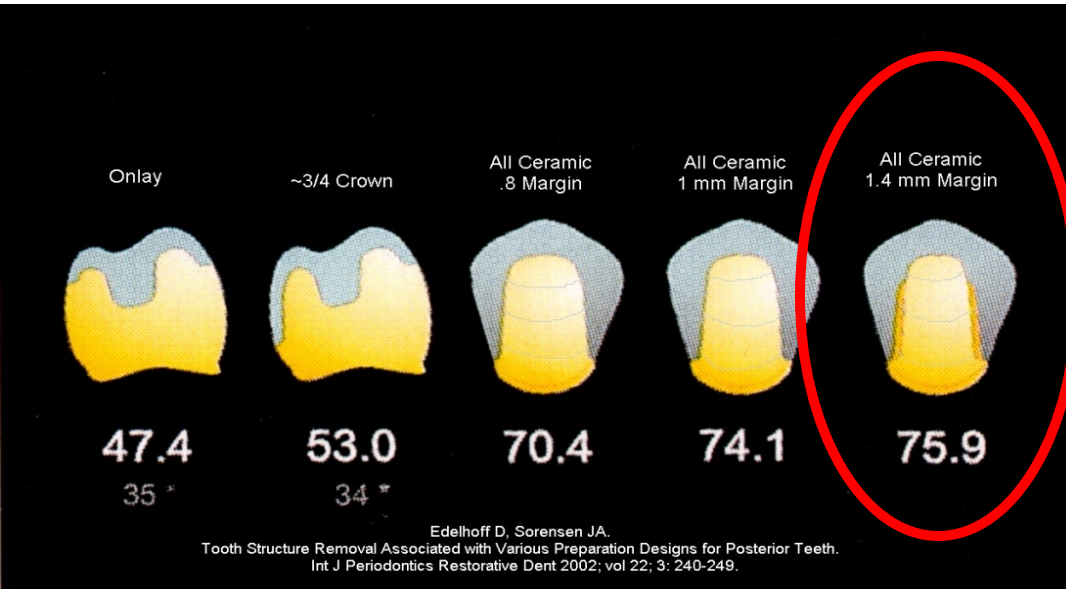


What percentage of the tooth is removed for a conservative crown prep?



Source: Google Images

# What percentage of the tooth is removed for a conservative crown prep?





5  
10  
15  
20

Central Width  
7.0mm

7.5mm

8.0mm

8.5mm

9.0mm

9.5mm

10mm

 **Panadent**  
**Esthetic Proportion**  
**Gauge**

Central Width | Central Height

8.0mm | 10.0mm

8.5mm | 10.6mm

9.0mm | 11.2mm

9.5mm | 11.8mm

10.0mm | 12.5mm















**TSS**

TOOTH & SURFACE SPECIFIC  
MATRIX SYSTEM  
BY BIOCLEAR



143 Anterior Matrices  
25 Anterior, 40 Upper & Lower  
Small & Medium Lower Incisor

76 Molars  
20 Lower Molars  
20 Medium Molars

**The next generation  
of anterior matrices:**

We're taking the  
guesswork out of  
to matrix selection



Contact your BioClear Sales Rep to Pre-Order  
[WWW.BIOCLEARMATRIX.COM](http://WWW.BIOCLEARMATRIX.COM)  
1-800-702-5327



**TSS**

TOOTH & SURFACE SPECIFIC  
MATRIX SYSTEM

BY DEXELAR



142 Anterior Matrices  
45 Straight, 40° Bevel & 10mm  
Straight & Bevel Upper Margins

26 Molars  
20 Straight Margins  
10 Bevel Margins

**The next generation  
of anterior matrices:**

We're taking the  
guesswork out of  
matrix selection



Contact your Dexelar Sales Rep or Pre-Dent  
[www.dexelardental.com](http://www.dexelardental.com)  
1.855.752.5327





**TSS**

TOOTH & SURFACE SPECIFIC  
MATRIX SYSTEM  
BY BOCCLEAR



84 Anterior Matrices  
Matrix for Maxillary Central & Lateral  
Incisor & Maxillary Canine Incisor

26 Wedges  
26 Sizes Available  
26 Different Weights

**The next generation  
of anterior matrices:**  
We're taking the  
guesswork out of  
to matrix selection



Contact your Bocclear Sales Rep to Pre-Order  
[WWW.BOCCLEARMATRIX.COM](http://WWW.BOCCLEARMATRIX.COM)  
1 800 793 5327



**TSS**  
TOOTH & SURFACE SPECIFIC  
MATRIX SYSTEM  
BY BIOCLEAR

**The next generation  
of anterior matrices:**  
We're taking the  
guesswork out of to  
matrix selection



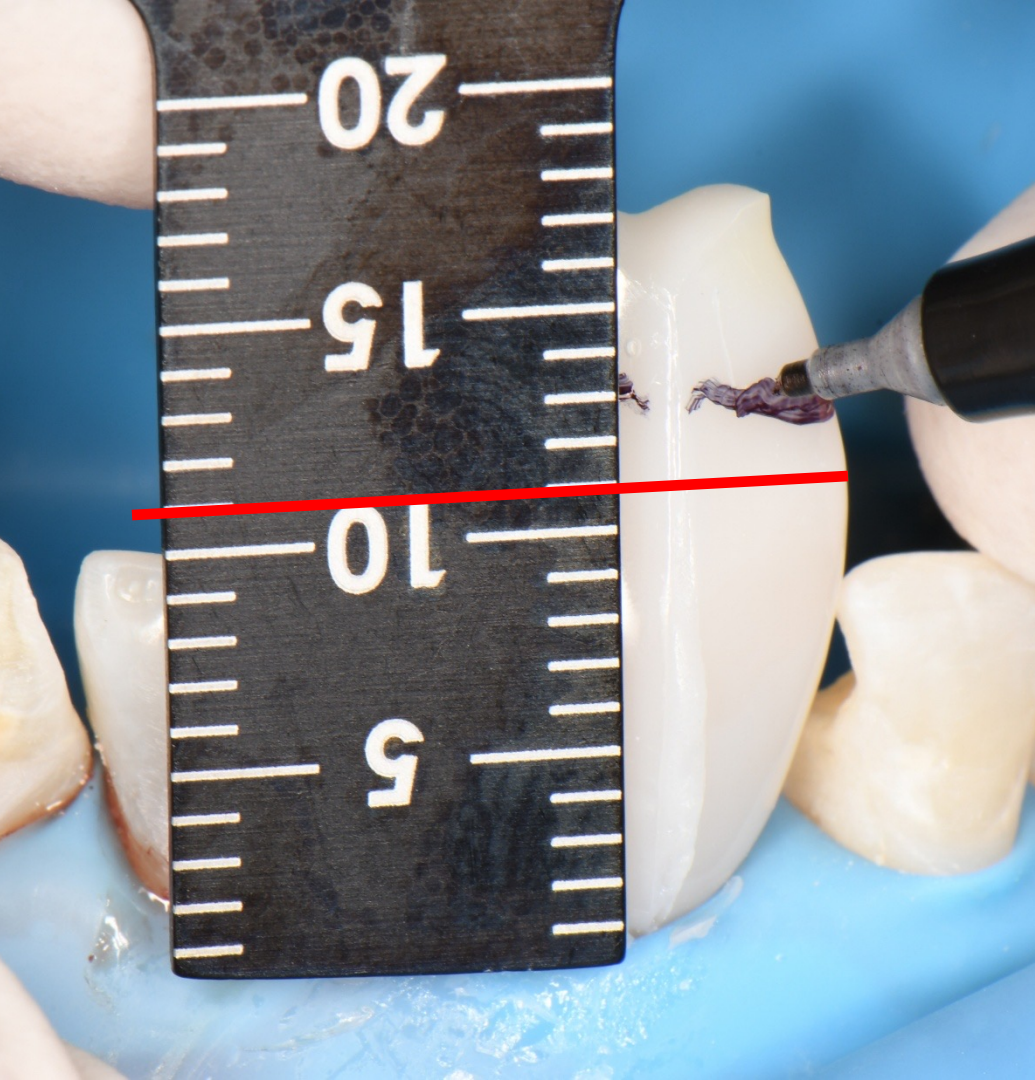
100 Anterior Matrices  
20 Single Size (Small & Extra Small)  
20 Small  
20 Medium  
20 Large



10 Wings  
10 Small Wings  
10 Medium Wings

Custom your BioClear Matrix Tray to Pre-Order  
[WWW.BIOCLEARMATRIX.COM](http://WWW.BIOCLEARMATRIX.COM)  
800.776.5627



















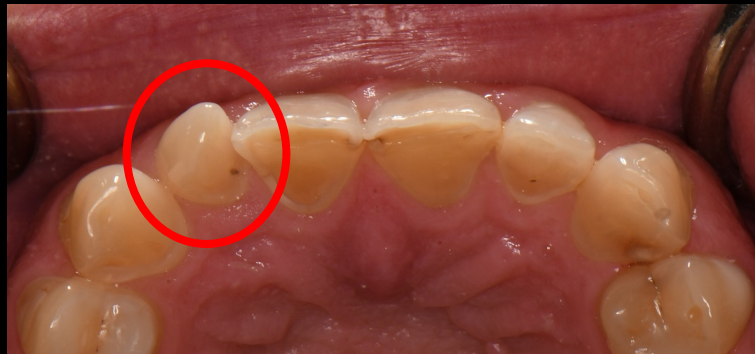
















Pre-operative



Immediate Post-Operative



One Week Post-Operative





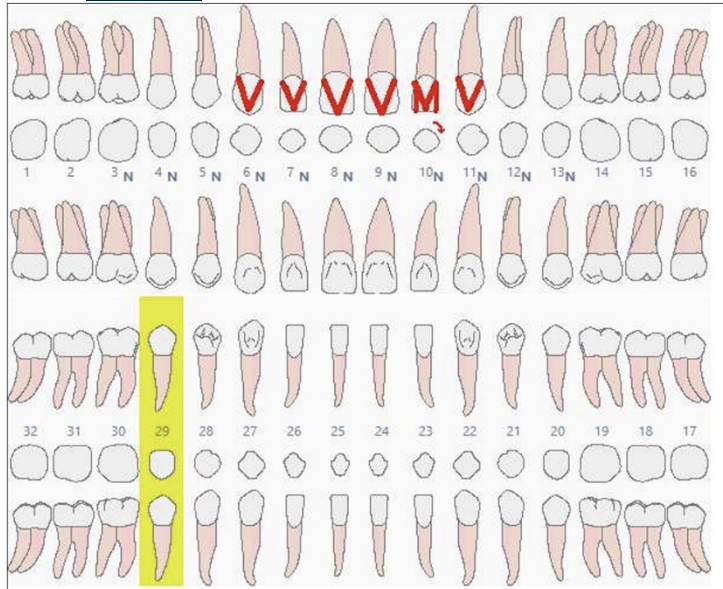




Last week...the  
day of treatment



This  
week...  
1-week  
post-op

Patient ChartPatient Name  
Patient ID

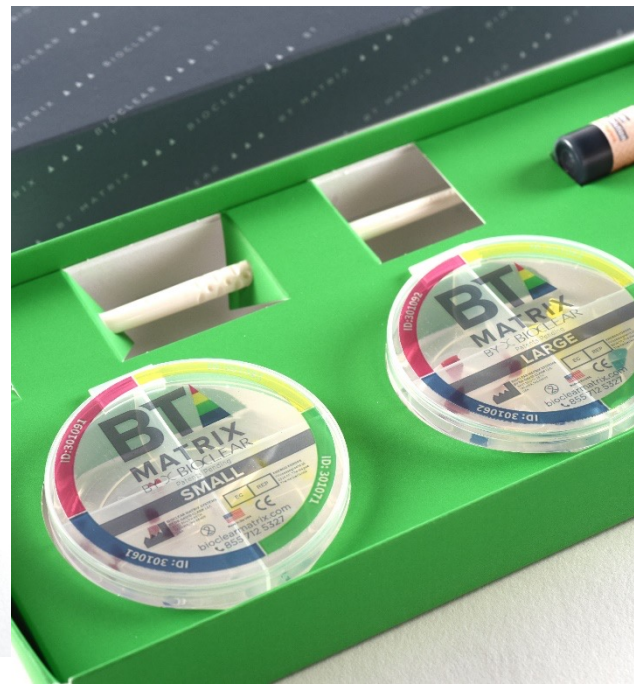
Date	Description	Provider	Th	Surf	Status	Fee
1/15/2026	2993A - BIOCLEAR 360 REJUVENATION COMPLEX	David J. Clark, D.D.S.	6		Proposed	\$1,840.00
1/15/2026	2993A - BIOCLEAR 360 REJUVENATION COMPLEX	David J. Clark, D.D.S.	7		Proposed	\$1,840.00
1/15/2026	2993A - BIOCLEAR 360 REJUVENATION COMPLEX	David J. Clark, D.D.S.	8		Proposed	\$1,840.00
1/15/2026	2993A - BIOCLEAR 360 REJUVENATION COMPLEX	David J. Clark, D.D.S.	9		Proposed	\$1,840.00
1/15/2026	2993A - BIOCLEAR 360 REJUVENATION COMPLEX	David J. Clark, D.D.S.	10		Proposed	\$1,840.00
1/15/2026	2993A - BIOCLEAR 360 REJUVENATION COMPLEX	David J. Clark, D.D.S.	11		Proposed	\$1,840.00
1/15/2026	199.2 - BIOCLEAR ORTHO CORRECTION PER TOOTH	David J. Clark, D.D.S.	10		Proposed	\$306.00
1/15/2026	299.5 - BIOCLEAR DIASTEMA CLOSURE	David J. Clark, D.D.S.	10	MD	Proposed	\$285.00



# Total Bioclear Case Fee?

# \$11,631

**BT**  
**MATRIX**  
BY ∞ BIOCLEAR





What are Erica's chief complaints?

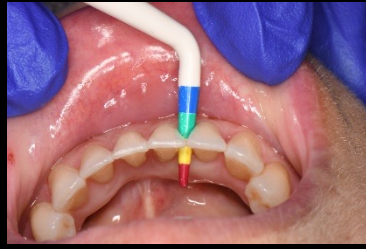
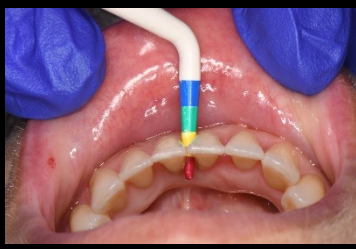


➤ Bioclear can fix almost everything if you follow the method

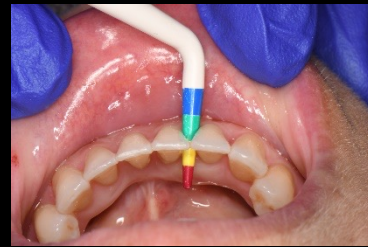


- Take photos from a lateral view. The patient doesn't see this (but everyone else in the room does)





➤ Gauge the triangle space **before** the rubber dam





- “Aquarium” matrices and “Shield” matrices











Pre-Operative



1-Year Post-Operative



Pre-Operative



1-Year Post-Operative




Pre-Operative



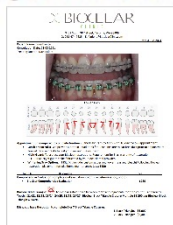
1-Year Post-Operative



- **Lunch and Breaks:** We provide a protein liquid drink for lunch. Be sure to eat breakfast prior to appointment. You will receive breaks to rest your jaw and use restroom.
- **Night Guard:** To protect your Bioclear restorations. Requirement for 5 yr. warranty of restoration. REFERRED: Night guard to be fabricated by your local dental provider.
- **Whitening Tray Options:** 1 Kit: (Kit include: custom upper and lower trays and bleach) Following Bioclear restoration placement for take home maintenance. Cost: **\$250**

Tooth #	Description	Fee
<b>Comprehensive Evaluation:</b> complete oral evaluation, color, size determination, photos.		
<ul style="list-style-type: none"> <li>• <b>Bioclear Comprehensive Evaluation</b></li> </ul>		<b>\$289</b>
<b>Bioclear Black Triangle:</b>  To close negative space between teeth and rejuvenate tooth to youthful appearance.		
<b>Tooth # 21/22, 22/23, 23/24, 24/25, 25/26, 26/27 Bioclear Black Triangle Closure Multiple \$1,200 per Bioclear Black Triangle Closure.</b>		

Erica, you have the option to complete 5 or 7 Black Triangle Closures.



**5 Black Triangles \$6,000**  
**7 Black Triangles \$8,400**

# Treating a Single Black Triangle

# Bioclear Black Triangle Restoration

*with Kuraray Majesty ES-2 Flowable*

---

























2-year follow up



2-year follow up

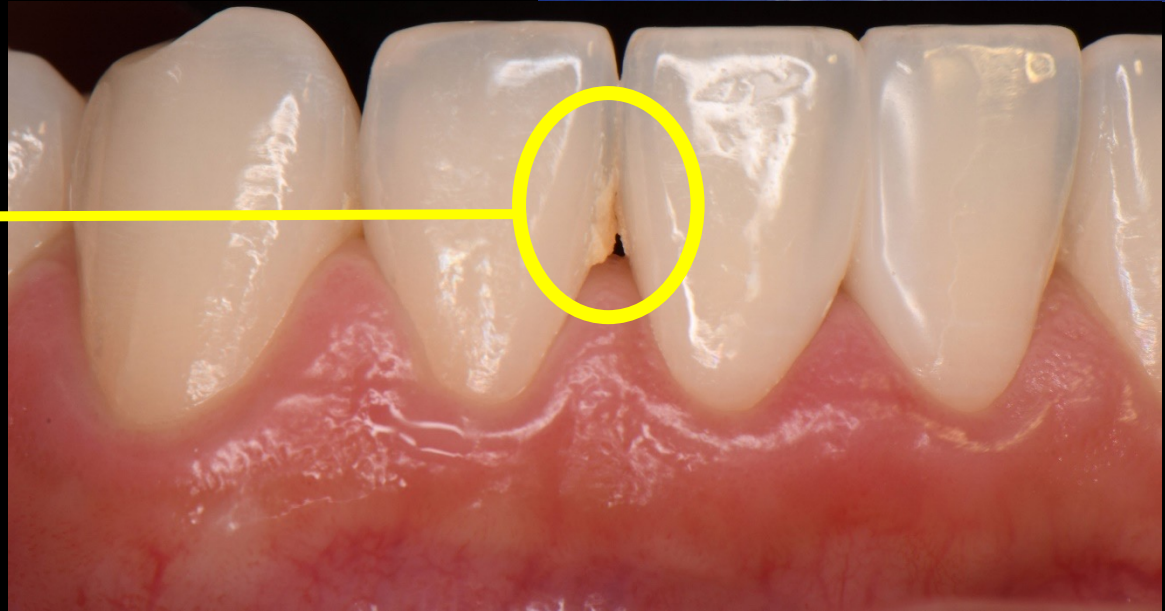


2-year follow up

➤ The new Bioclear BT matrices have a specific shape i.e. shoulder blades that deflect bacterial accumulation



unrestored



- The new Bioclear BT matrices have a specific shape i.e. shoulder blades that deflect bacterial accumulation



Injection over -  
molded







Dr. Michael Scott  
Lubbock, TX

Before



After



Dr. John Yun  
Toronto, ON



Dr. David Carroll,  
Prosthodontist,  
Aventura FL





Dr. Scott Kollen  
Vancouver, BC



Dr. Scott Kollen  
D.M.D.






Dr. Antonio  
Mendoza,  
Barcelona  
Spain



W  
dentistry



 vnsdentistry

**Bioclear Matrix System**

8 HOURS AGO





Courtesy Dr. Charles Regalado



Courtesy Dr. Charles Regalado







Courtesy Dr. Charles Regalado



Courtesy Dr. Charles Regalado



Courtesy Dr. Charles Regalado





Courtesy Dr. Charles Regalado



# Getting paid to be conservative

## BIOCLEAR VS. CROWNS AND VENEERS

Bioclear is an alternative to traditional dental methods for enhancing a smile. Rather than grinding down a tooth to prepare for a crown or veneer, the Bioclear Method of encasing the natural tooth structure retains the natural tooth enamel and tooth durability.



### BIOCLEAR PREPARATION

Bioclear allows dentists to **conserve** healthy tooth structure



### CROWN PREPARATION

Crowns require dentists to **remove an average of 76%** of the tooth structure prior to the procedure

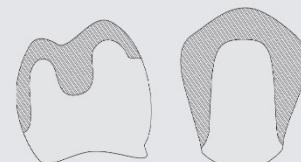


### VENEER PREPARATION

Veneers require dentists to **remove an average of 47%** of the tooth structure prior to the procedure

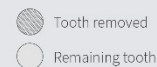
## AN HONEST LOOK AT CROWN PREPARATIONS

As illustrated below, crowns, veneers, and onlays require the removal of a significant amount of healthy tooth structure. Bioclear dentists can leave most or all of the tooth structure. Bioclear is a very attractive option to patients.



~3/4 Crown  
**47%** of tooth removed

Full Crown  
**76%** of tooth removed



# How do I start my Bioclear journey?

# Get Bioclear Certified!

---



*Attend a course to get certified as a student: **boost your resume** and get prepared to bring **modern skills** to the table post-grad.*

Register for our **Student-only class** at 90% off tuition:

- **Limited size:** available to 50 students
- **Student tuition: \$795**  
*Regular tuition: \$7,950*
- **Dates:**  
July 15<sup>th</sup>-18<sup>th</sup>  
December 9<sup>th</sup>- 12<sup>th</sup>
- **Tuition includes:**  
Student TSS, Evolve, and Black Triangle Kits  
*Combined \$750 value!*

∞ BIOCLEAR

FOR CLINICIANS WHO BELIEVE IN BETTER, THERE'S

**BIOCLEAR™  
CERTIFICATION**

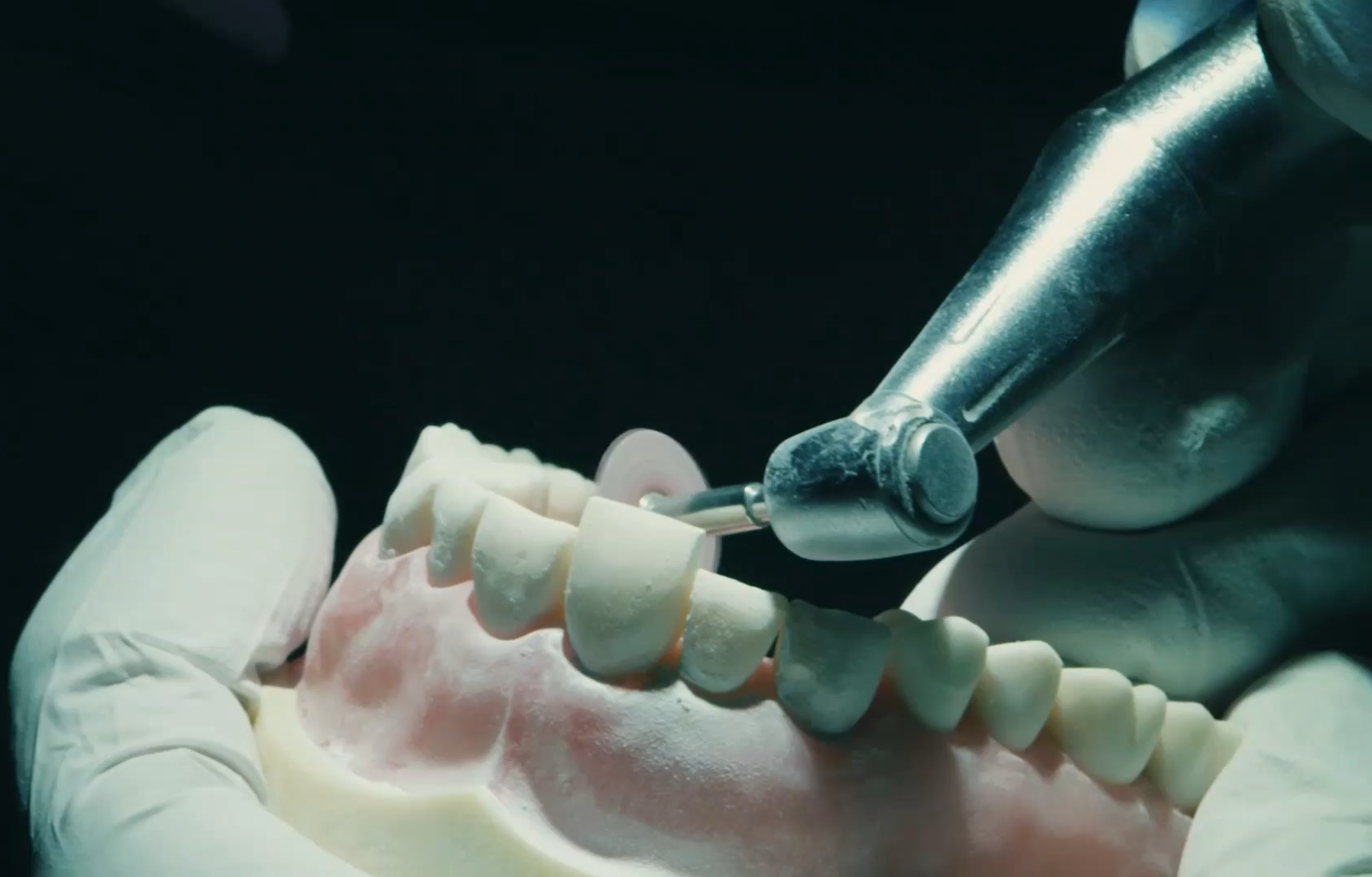
Dr. Jennifer Roe  
Wimberley, TX  
*Bioclear Certified  
since 2021*



Dr. Charlie Regalado  
Spokane, WA  
*Bioclear Certified  
since 2016*

---

*Interested? Contact*  
**[tanya@bioclearmatrix.com](mailto:tanya@bioclearmatrix.com)**





# Become a Bioclear Ambassador

We're looking for ambassadors at your dental school! To become a student ambassador, simply connect us with your go-to professor and **you will both receive a full suite of free Bioclear products and kits.**

**Interested?** Contact [tanya@bioclearmatrix.comx](mailto:tanya@bioclearmatrix.comx)



# 4-Day Core Anterior + Posterior

36 CE Credits | 4 Days | Tacoma, WA

## ALL DATES:

June 4-7, 2025

August 6-9, 2025

September 10-13, 2025

October 8-11, 2025

November 5-8, 2025

February 4-7, 2026

March 25-28, 2026

April 15-18, 2026

May 13-16, 2026

June 10-13, 2026

August 26-29, 2026

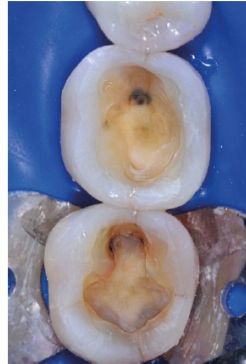
September 16-19, 2026

October 14-17, 2026

November 4-7, 2026



BEFORE



AFTER



BEFORE



AFTER



BEFORE



AFTER

**STUDENT DISCOUNT:**

**90% OFF TUITION**

**~~\$7,950~~ \$795**

## BIOCLEAR FOR THE PEDIATRIC DENTIST CERTIFICATION COURSE

18 CE CREDITS

This certification course was created for the pediatric specialist or general dentist who treats children and teens. Over 2 days, participants will learn how to place Bioclear restorations in both the anterior AND posterior. This course was designed to be the most comprehensive, practice-changing, training for the pediatric dentist.



**LEARN MORE: [joshua@bioclearmatrix.com](mailto:joshua@bioclearmatrix.com)**

## BIOCLEAR FOR THE PEDIATRIC DENTIST CERTIFICATION COURSE

18 CE CREDITS

What you will learn:

### Day 1

- Transitioning from GV Black to Clark Class II non-retentive preparations designed specifically for composite
- Predictable and esthetic class II restorations that mimic natural contacts
- Treatment of severely hypoplastic/carious molars without stainless steel crowns
- Proper removal of biofilm for predictable sealants and composite restorations
- Quadrant strategy for multiple posterior class II restorations in permanent teeth

### Day 2

- Class III restorations in primary and permanent teeth
- Class IV fracture repairs that ensconce the tooth in composite (minimizing re-fracturing and maximizing esthetics)
- Restoration of Peg laterals
- Treatment planning tooth size discrepancies pre and post ortho (including post-Invisalign black triangles.)

# BLACK TRIANGLE CERTIFICATION COURSE

7 CE CREDITS

In this introductory course, learn the basics of Bioclear and heated injection molding in a small, interactive online class. In this live – and lively – 7-hour course, you will be introduced to the benefits of Bioclear, practice Bioclear techniques on soft-tissue dentoforms, and come away with the basic skills and understanding needed as a precursor to performing the Bioclear Method on patients.

## LEARN MORE



BEFORE



SIX YEARS AFTER



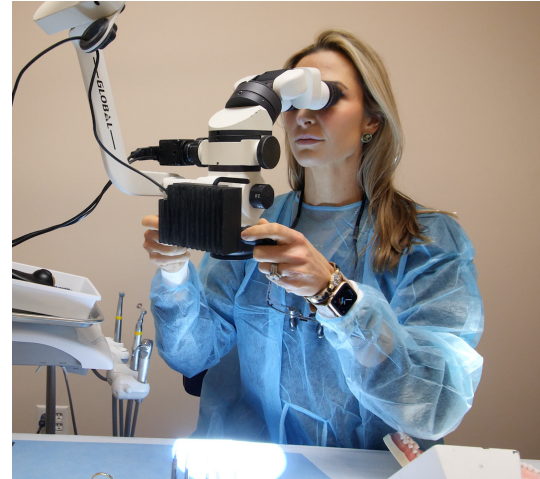
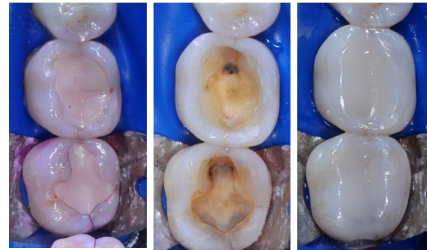
# 4-DAY CORE ANTERIOR & POSTERIOR COURSE

## 36 CE CREDITS

This course builds a strong foundation in the Bioclear Method and an understanding of Bioclear products. The focus of the course is indirect methods on adult dentitions as an alternative procedure to porcelain crowns and veneers.

Students will learn the foundation of posterior and anterior restorations and are introduced to the engineering principles involved in the design of the new non-retentive compression-based preps. Students collaboratively practice all applications of the Bioclear Method during intensive, hands-on exercises that simulate posterior and anterior restorations.

### LEARN MORE

**BEFORE****AFTER**







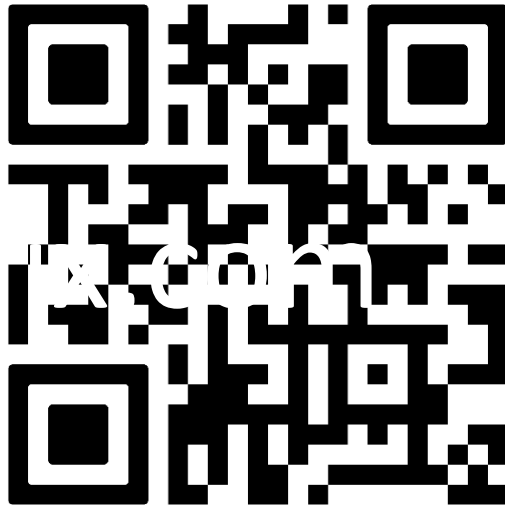




# Last week's attendees at the certification course



For a copy of today's presentation,  
Learning Center info or the essential  
Bioclear Library



For a copy of today's presentation,  
Learning Center info or the essential  
Bioclear Library, email us at:

[lectures@bioclearmatrix.com](mailto:lectures@bioclearmatrix.com)

See you all in a few minutes for the Bioclear breakout session where you will get a chance to perform injection molded composite to treat Black Triangles using a take-home model (Models Limited to 150 participants)



# The Bioclear Direct Contact Strut

*Creating Contacts for Diastemas, Peg Laterals, and Bioclear 360° Veneers*

- Abbreviated Version -

---